

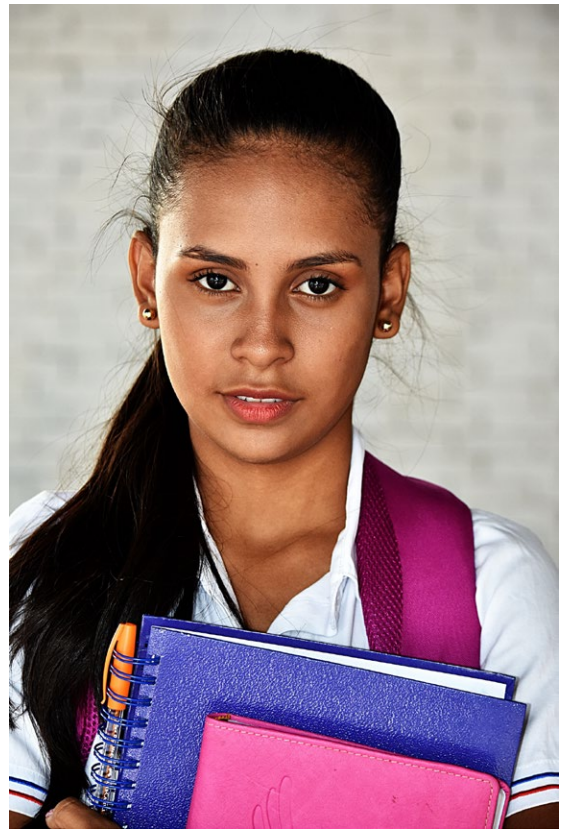
Alternative Education Independent Study Program

For students who need
a fresh start at learning

Individualized Program

Art & Elective Courses • General Education

One-on-One Support • College Prep



The Alternative Education Department Independent Study Program – approved by the Western Association of Schools and Colleges – provides an individualized course of study where students attend class weekly to receive direct instruction, guided practice, targeted assessments, and support to earn their high school diploma.

Independent Study Students

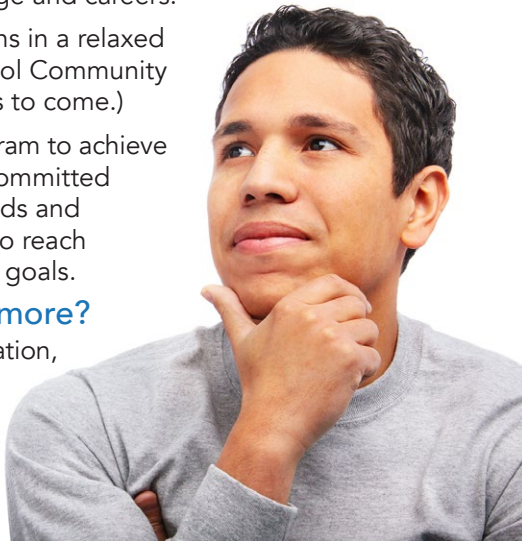
Our students need options beyond the traditional school setting. They are motivated, intelligent, and interested in navigating their own educational path and earn a California High School diploma. They are preparing for college and careers.

Students attend their sessions in a relaxed learning environment at Sunol Community School. (Additional locations to come.)

Students enter into our program to achieve their full potential. We are committed to supporting individual needs and ensuring that they are able to reach their educational and career goals.

Interested in learning more?

To enroll, or for more information, contact Norma Bayless, Transition Coordinator at nbayless@sccoe.org or (408) 573-3214.



Available for Students:

- Weekly one one-hour session with a credentialed teacher
- 24/7 access to online courses, traditional assignments, and blended learning as defined by student interest and learning needs
- General Education & College Prep educational programming
- Individual Goal Setting and Pace
- Post-Secondary Planning
- Individualized setting.
- Access to academic, career, and social-emotional counseling
- Relaxed learning environment
- Field Trip opportunities
- Credentialed teachers (grades 6-12)
- School therapists
- Art Studio access weekly
- CTE (Career Technical Education) – Career Readiness programming
- Work/Study experience credit
- Drop-in sessions and small group tutoring
- Extended Class times per location