

OYA Governing Board

Continuous Improvement
Year 1
Quarterly ILP Advisory

Katherine Everett, Ed.D.
OYA Assistant Principal
April 18, 2022

OYA Local Control and Accountability Plan 2021-2022



Annual Update for Developing the 2021-22 Local Control and Accountability Plan

Annual Update for the 2019–20 Local Control and Accountability Plan Year

LEA Name	Contact Name and Title	Email and Phone
Opportunity Youth Academy	Phil Morales Director/Principal	pmorales@sccoe.org 408-573-3261

The following is the local educational agency's (LEA's) analysis of its goals, measurable outcomes and actions and services from the 2019-20 Local Control and Accountability Plan (LCAP).

<https://sites.google.com/sccoe.org/oya/community-resources>

OYA Western Association of Schools and Colleges Accreditation Action Plan 2020-2026

Goal 1

- Increase the performance of English Learners
 - EL students will show an increase in scores on ELPAC
 - EL students who qualify will be Redesignated Fluent English Proficient (RFEP)

Professional Learning and Support

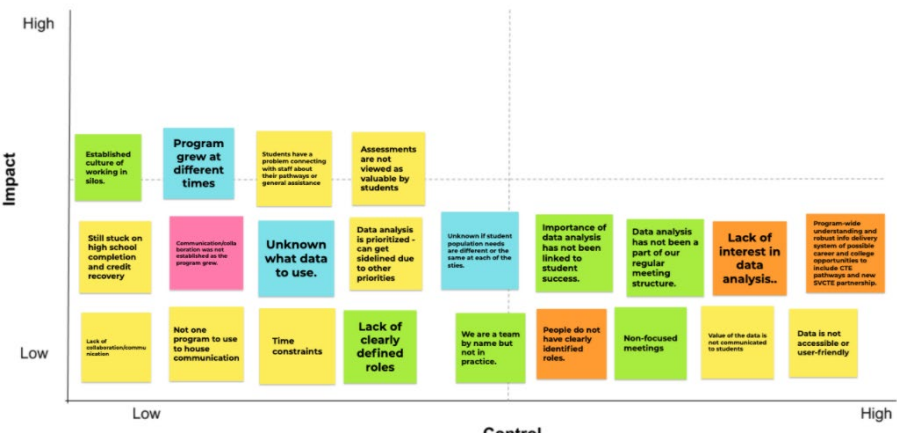
- SCCOE Differentiated Assistance and District Support
 - Data Improvement Team
- SCCOE English Language Development Coordinator
 - OYA Teachers
- National Geographic and Cengage Learning ELD EDGE Curriculum
 - OYA Teachers
- SCCOE Inclusion Collaborative Coordinators
 - Paraeducator Universal Design for Learning Focused on English Learner success
- Carnegie Foundation for the Advancement of Teaching
 - OYA Administrative Team

OYA Improvement Team Developing YOUR System of Measures

Name of Change Idea (Driver Category)	Outcome Measure(s) leading/lagging	Interim Measures (Driver and/or Process)	PDSA Measures	Balancing Measures
Change Idea - Identify a project management tool and develop process for use (Monday.com) (Driver - Shared Culture and Mindset)	% of teachers meeting with 70% of their students four times a year to complete a data dialogue within the ILP/Advisory course (Logging) % of students completing the ILP/Advisory course per quarter (Leading)	#/% of transition plans created Increase in collaboration between project leads based on data in Monday (shared culture/mindset)	Effectiveness of Monday.com for collaboration Can it do what we need it to do (with one event)? What do we want to pay attention to? Do users find tool efficient and easy to use? If not used, why not?	Impact on student's academic scores (reading/math) Impact on student attendance (based on Aeries)
Change Idea - OYA ELPAC PD Series (Driver - Data Literacy)	% of teachers meeting with 70% of their students four times a year to complete a data dialogue within the ILP/Advisory course (Logging) % of students	Teacher understanding of ELPAC scores and how to use that information to inform teaching and learning Are we making movement in the level of comfort in	How are we creating effective PD sessions to get them to a place of comfort to incorporate the data?	Impact on student's academic scores (reading/math) Impact on student attendance (based on Aeries)

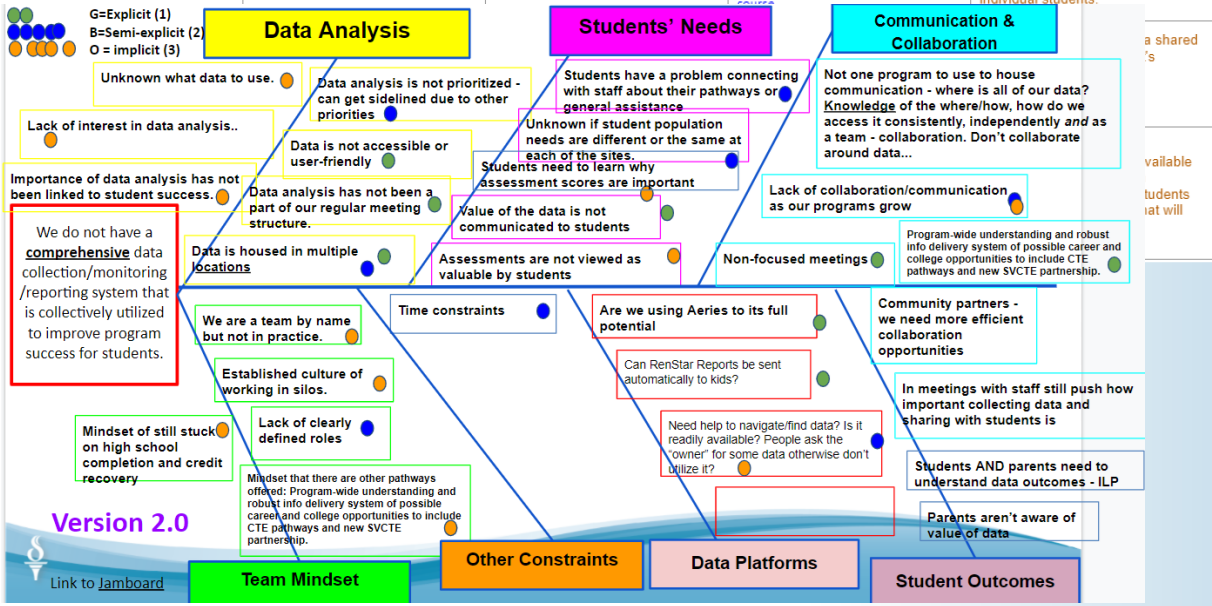
Impact and Control

Link to [Jamboard](#)



Developing Theory of Action

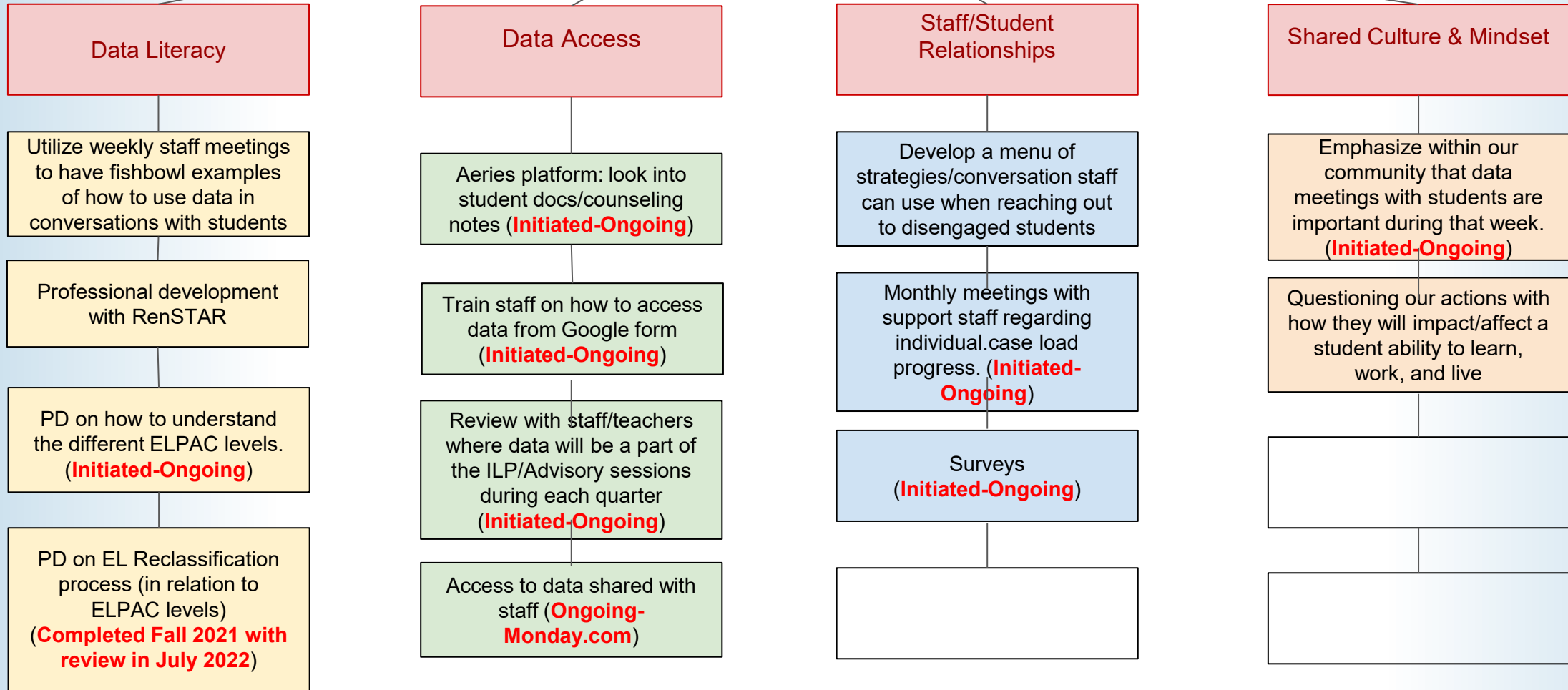
If we _____	then we impact ____	that will result in ____	because _____
(change idea)	(driver)	(larger aim)	(validation from data)
If we begin to utilize the features in Aeries (counseling notes, student docs, etc) more effectively, so all data is in one place	Then we impact staff's access to data	That will result in enabling 100% of teachers to meet with 70% of their students four times a year to complete a data dialogue within the ILP/Advisory course.	Because staff will have the student's data profile easily accessible and thus will be able to refer to that data during the ILP meetings.
If we surveyed students about their academic needs and supports, and reviewed their results quarterly	Then we impact staff and student relationships...	That will result in having 100% of teachers meeting with 70% of their students four times a year to complete a data dialogue within the ILP/Advisory course.	
Review with staff/teachers where and which data will be a part of the ILP/Advisory sessions during each quarter	Then we impact staff's access to data and what data to communicate to students	That will result in having 100% of teachers meeting with 70% of their students four times a year to complete a data dialogue within the ILP/Advisory course.	Because staff will know and understand the data to be shared and begin to associate the importance of the data with individual students.



Aim Statement

- Clearly defines success for an improvement effort
- Scopes the effort; defines the system that you will improve

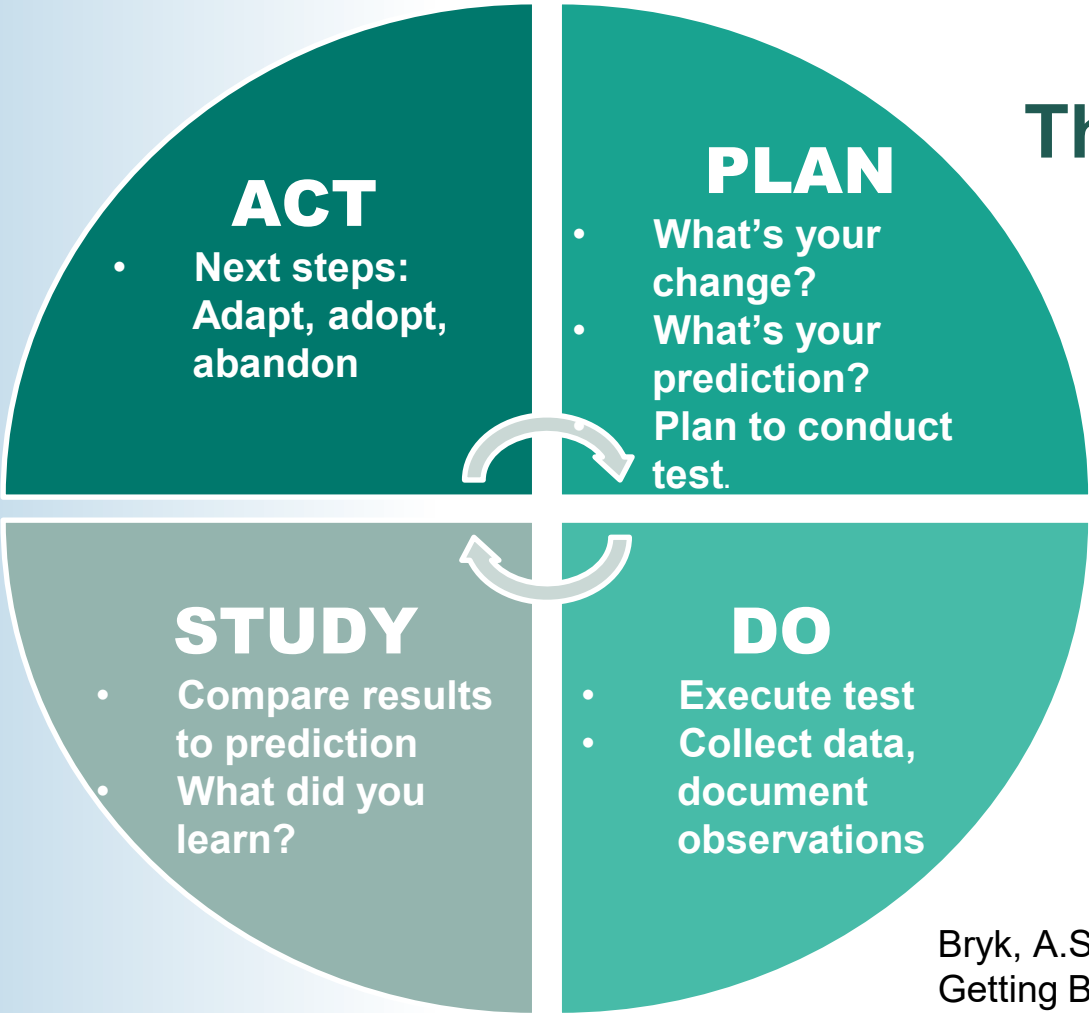
By June 2022, 100% of teachers will meet with 70% of their students four times a year to complete a data dialogue within the ILP Advisory course.



Driver Diagram

Equity • Diversity • Inclusion • Partnership

The Plan-Do-Study-Act (PDSA) Cycle

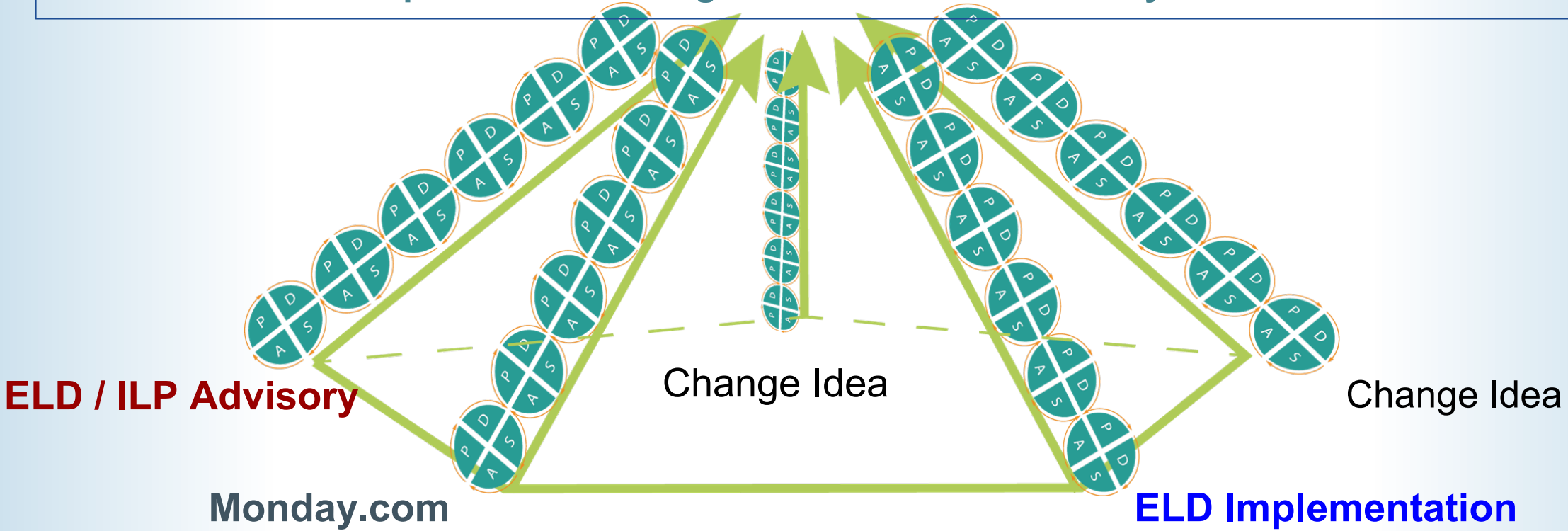


[PDSA Quick Guide](#)

Bryk, A.S., et al. (2017) Learning to Improve: How America's Schools Can Get Better at Getting Better

Managing Multiple Ramps of PDSAs

By June 2022, 100% of teachers will meet with 70% of their students four times a year to complete a data dialogue within the ILP Advisory course.



GOAL: By June 2022, 100% of teachers will meet with 70% of their students four times a year to complete a data dialogue within the ILP/Advisory course.

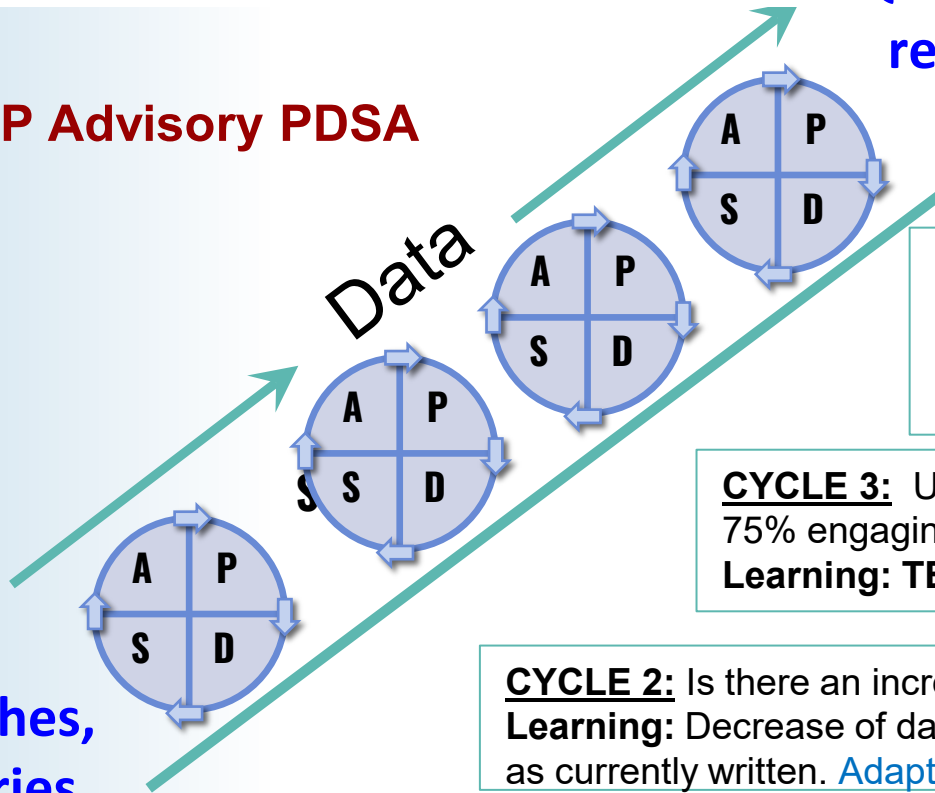
Office of Education

Sustain and monitor.
Move on to another problem.

ELD/ILP Advisory PDSA

Hunches,
theories,
ideas, best
practices

Quality with
reliability



CYCLE 5:
Learning:

CYCLE 4:
Learning:

CYCLE 3: Using adapted data dialogue 200 students will complete data dialogue with 75% engaging in assessment score discussion. 200 will complete student survey.
Learning: TBD 01APR22

CYCLE 2: Is there an increase in the number of Data Dialogue & Student Surveys completed Q1 to Q2
Learning: Decrease of data dialogue responses with teachers reporting data dialogue form not working as currently written. [Adapt](#)

CYCLE 1: Understanding the ELPAC Tasks and Domains.
Learning: Domain Graphic Organizer would be substantial support moving forward. [Adopt.](#)

Equity • Diversity • Inclusion • Partnership

Testing Your Plan: OYA

Identify a specific **change** to test.

Give **details** of what you will do to execute the test of this idea.

What is being tested?
Who will conduct the test?
When will the test occur?
When will you come together to talk about the results of the test?

What questions will this test answer for your team?
(What are you hoping to learn?)

What data will you collect to answer the questions?
How will you collect this?

Identify a clear learning **goal**. What do you hope to learn from this particular test?

Identify what **data** you will need to evaluate your predictions - can be "quick and dirty"!

	<ul style="list-style-type: none">• What:• How:
	<ul style="list-style-type: none">• What:• How:
<ul style="list-style-type: none">•	<ul style="list-style-type: none">• What:• How:

Make specific **predictions** about what you think will happen.

What Predictions do you have?

-

Observations, surprises, obstacles.

What did we observe or collect? (After the test)

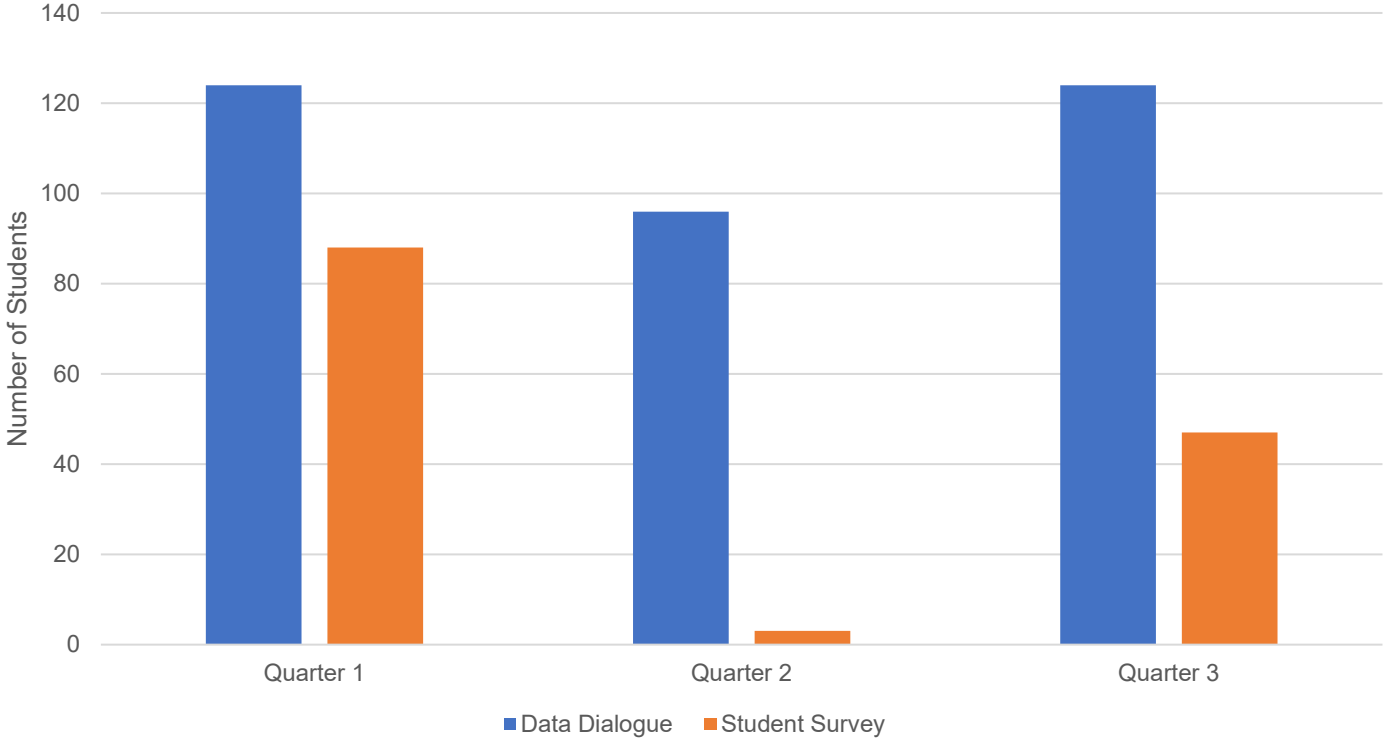
What did you learn?

What can we say we learned about the implementation of this test? (After the test)
What are our next steps? (Adapt/Adopt/Abandon)

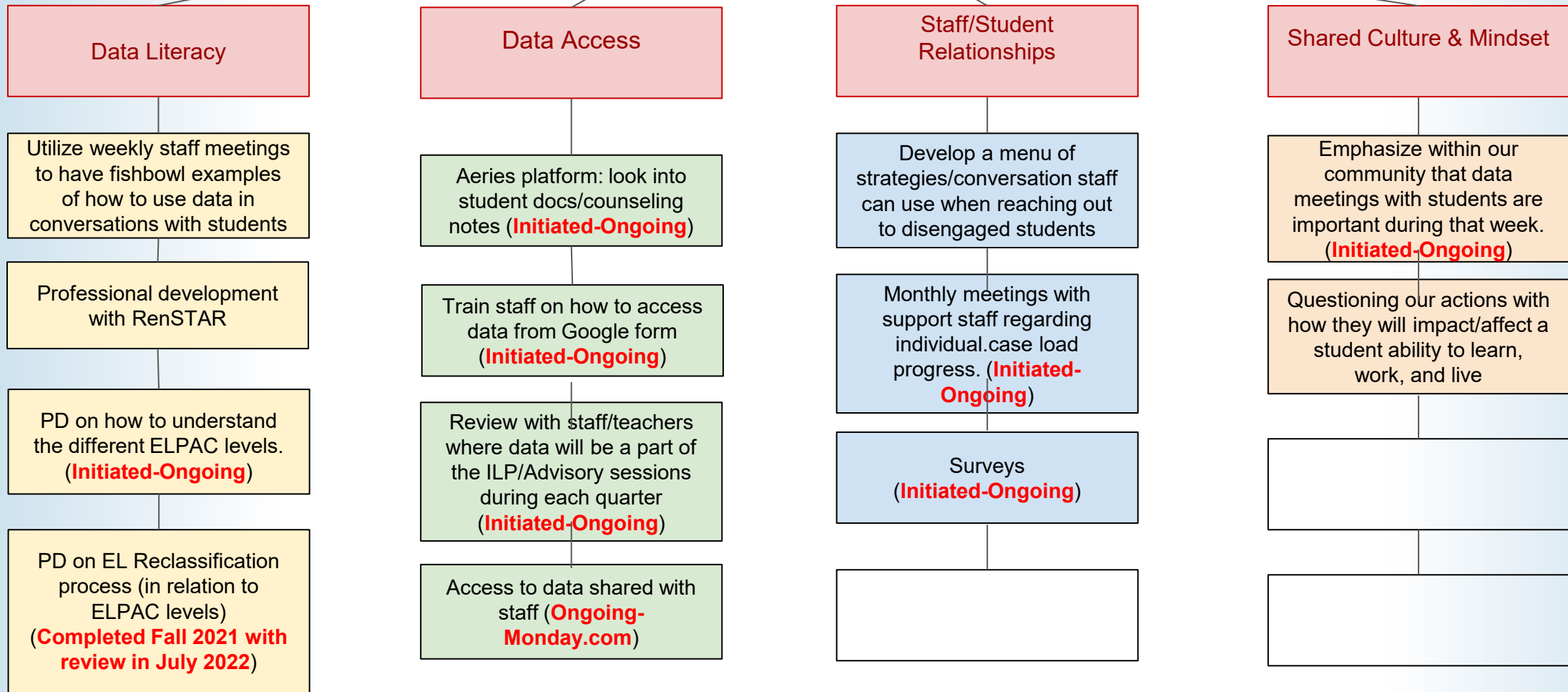
Cycles 1-3 ELD/ILP Advisory PDSA

- Aug-Oct 2021 Cycle 1
 - ELPAC and EDGE training received favorably with adoption of the student profile/domain graphic organizer and an initial understanding of the EDGE curriculum
- Nov-Dec 2021 Cycle 2
 - Use of teacher feedback survey identified weaknesses in data dialogue google form which informed changes for Q3
- Jan-Apr 8, 2022 Cycle 3
 - New data dialogue form with accompanying “how to” videos noting changes
 - Many staff had not updated their course - “how to” video with steps to update teacher ILP Advisory courses
 - Q3 is in-progress at this time with target end date of 4/8/22

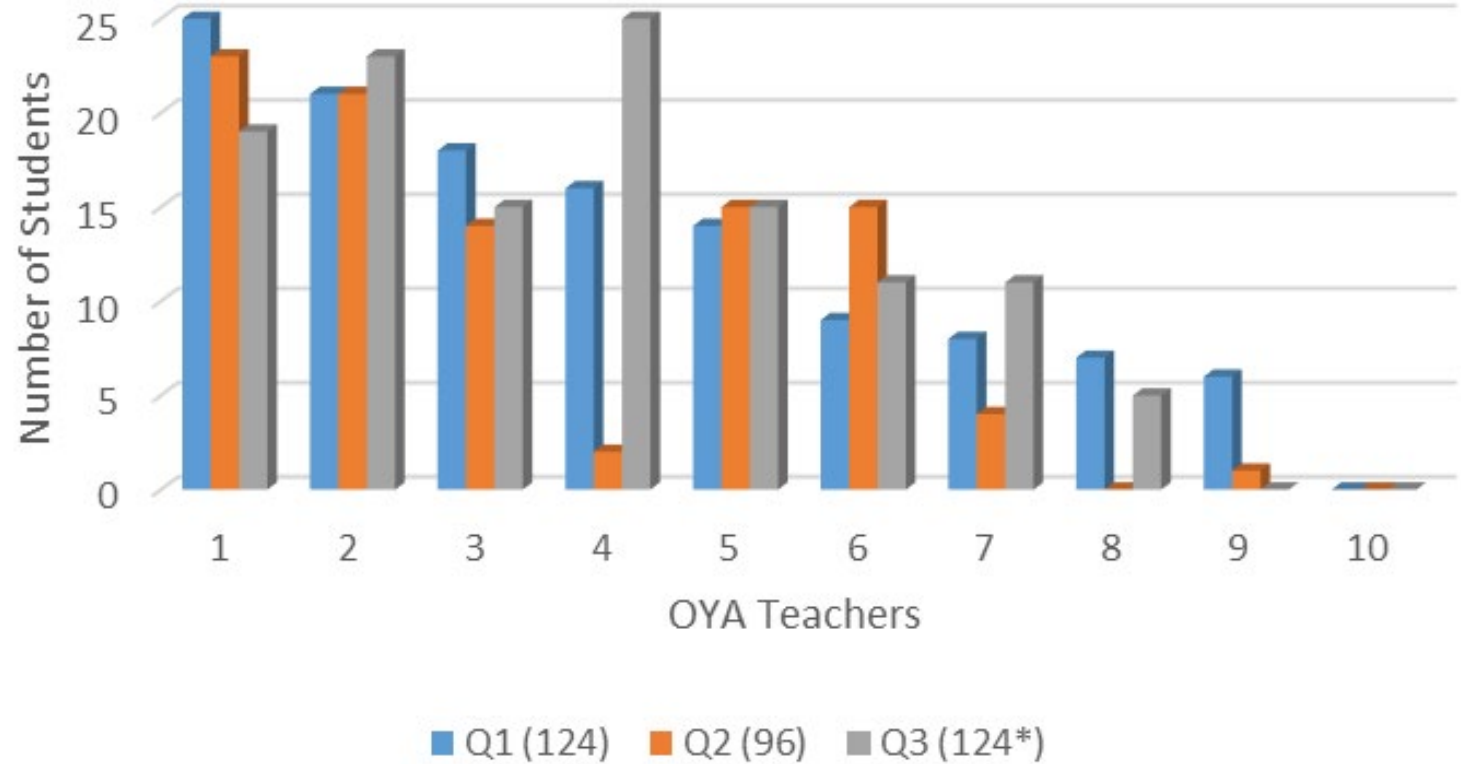
2021-2022 Quarterly ILP Advisory Sessions



By June 2022, 100% of teachers will meet with 70% of their students four times a year to complete a data dialogue within the ILP Advisory course.



ILP Advisory Student Sessions by Teacher





<https://sites.google.com/sccoe.org/oya> or at
tinyurl.com/InsideOYA

- Social Media



- [IMPACT Weekly](#) (e-newsletter)
- www.sccoe.org

County Superintendent



Dr. Mary Ann Dewan

County Board of Education



Victoria Chon
Area 5



Joseph Di Salvo
Area 4



Rosemary Kamei
Area 3



Grace Mah
Area 1



Peter Ortiz
Area 6



Claudia Rossi
Area 7



Tara Sreekrishnan
Area 2