



# Santa Clara County Office of Education

2016-2017

## **ANNUAL CHARTER SCHOOL DATA BOOK**

CHARTER SCHOOL OFFICE  
OFFICE OF THE SUPERINTENDENT



# SANTA CLARA COUNTY BOARD OF EDUCATION



**Michael Chang**  
*Board President*

Area 2: Cupertino Union, Lakeside Joint Union, Loma Prieta Joint Union, Los Gatos Union, Saratoga Union, and Los Gatos-Saratoga Joint Union High School district and small portions of Santa Clara Unified and Sunnyvale and the corresponding portion of Fremont Union High



**Joseph Di Salvo**  
*Board Member*

Area 2: Majority portion of San Jose Unified, a portion of Oak Grove and corresponding portion of East Side Union High school districts



**Darcie Green**  
*Board Member*

Area 6: Alum Rock, Mt Pleasant, and Franklin-McKinley and corresponding portion of East Side Union high school districts and a small portion of San Jose Unified



**Rosemary Kamei**  
*Vice President*

Area 3: Campbell Union, Luther Burbank, Moreland Union and Campbell Union High school districts and a small portions of San Jose Unified and Santa Clara Unified



**Grace H. Mah**  
*Board Member*

Area 1: Palo Alto Unified, Los Altos, Mountain View Whisman, Mountain View-Los Altos Union High school districts and a majority portion of Sunnyvale school district and the corresponding portions of Fremont Union High school district



**Claudia Rossi**  
*Board Member*

Area 7: Morgan Hill Unified, Gilroy Unified, Evergreen, and a portion of Oak Grove and corresponding portion of East Side Union High school districts



**Anna Song**  
*Board Member*

Area 5: Majority portion of Santa Clara Unified, Milpitas Unified, Orchard, Berryessa Union, and corresponding portion of East Side Union High school districts

The Santa Clara County Board of Education (SCCBOE) is the elected governing body of the Santa Clara County Office of Education (SCCOE). The SCCBOE works with the County Superintendent to develop sound educational policies and ensure the solvency of the SCCOE. Together, they are a strong and cohesive team that helps the SCCOE continuously set and achieve new levels of service and excellence. The Trustees are elected from different regions of the county and serve four-year terms.

# FRAMING OUR FUTURE

## Mission

The Santa Clara County Office of Education is committed to serving, inspiring, and promoting student and public school success.

## Vision

Transforming Education through Leadership, Service, and Advocacy

## Goals

Improve student equity and access to high quality education

Provide support to districts, communities, schools, and students

Be a premier employer

Improve organizational effectiveness and efficiency

## Values

Students First

Collaboration

Innovation

Service





## A Message from the Santa Clara County Board of Education and the Superintendent

This is the third issue of our Annual Charter School Data Book (2016-2017). This Annual Charter School Data Book provides information of vital interest to the performance and progress of the SCCOE Board authorized charter schools.

The Santa Clara County Office of Education (SCCOE) remains committed to serving, inspiring and promoting student and public school success. Our first goal is to “improve student equity and access to high-quality education.” One of the avenues pursued in achieving this goal is the authorization of high-quality charter schools. The Santa Clara Board of Education (County Board) is granted the authority in California Education Code to approve or deny charter school petitions on appeal from a school district and to authorize countywide charter schools. This past year 23 County Board authorized charter schools were in operation providing instructional services to over 9,345 students.

SCCOE staff has created this Annual Data Book to provide a snapshot of the charter schools at one-point-in-time. The information and data provided has been obtained from the California Department of Education and the respective charter schools. Where appropriate, (2015-2016) demographic and student performance data from the California Department of Education (Dataquest) was utilized. Individual charter schools were also able to present their current (2015-2016) site level information.

SCCOE and the SCCBOE continue to be champions for children.

Thank you,

---

Michael Chang  
President, Santa Clara County Board of Education

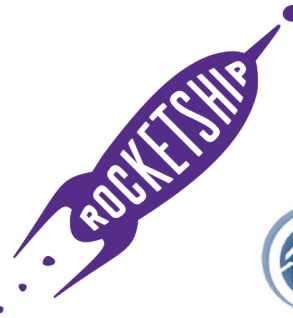
---

Jon Gundry  
Santa Clara County Superintendent of Schools

# CONTENTS

SCCOE CHARTER SCHOOLS AT-A-GLANCE.....	5
CHARTER SCHOOLS ENROLLMENT BY ETHNICITY 2015-16.....	6
SANTA CLARA DISTRICT DEMOGRAPHICS 2015-16.....	7
STUDENT PERFORMANCE 2015-16.....	9
CHARTER SCHOOL INFORMATION 2015-16.....	11
SPECIAL EDUCATION: STUDENTS WITH IEPS ENROLLED IN SCCOE CHARTER SCHOOLS 2015-2016.....	13
CHARTER SCHOOL SUSPENSION & EXPULSION REPORT 2015-2016.....	14
FINANCIAL STATUS 2015-16.....	15
ACE EMPOWER ACADEMY.....	16
ALPHA PUBLIC SCHOOLS: JOSÉ HERNÁNDEZ MIDDLE SCHOOL.....	17
BULLIS CHARTER SCHOOL.....	18
DISCOVERY CHARTER SCHOOL I.....	19
DISCOVERY CHARTER SCHOOL II.....	20
DOWNTOWN COLLEGE PREP (DCP): ALUM ROCK.....	21
OPPORTUNITY YOUTH ACADEMY (OYA).....	22
ROCKETSHIP ALMA ACADEMY.....	23
ROCKETSHIP BRILLIANT MINDS.....	24
ROCKETSHIP DISCOVERY PREP.....	25
ROCKETSHIP FUERZA.....	27
ROCKETSHIP LOS SUEÑOS.....	26
ROCKETSHIP MATEO SHEEDY.....	28
ROCKETSHIP RISING STARS.....	29
ROCKETSHIP SÍ SE PUEDE.....	30
SPARK CHARTER SHOOOL.....	31
SUMMIT PUBLIC SCHOOLS: DENALI.....	32
SUMMIT PUBLIC SCHOOLS: TAHOMA.....	33
SUNRISE MIDDLE SCHOOL.....	34
UNIVERSITY PREP ACADEMY.....	35
VOICES COLLEGE BOUND LANGUAGE ART ACADEMY AT MORGAN HILL.....	36
VOICES COLLEGE BOUND LANGUAGE ACADEMY AT MT. PLEASANT.....	37
SCCOE DISTRICT ENROLLMENT.....	38
PETITION HISTORY.....	39
APPENDIX A. EDUCATION CODE SELECTIONS REGARDING CHARTER SCHOOLS.....	41
2016-17 SCCOE CHARTER SCHOOL DIRECTORY.....	45
ACKNOWLEDGEMENTS.....	47
LIST OF ACRONYMS.....	48

# SCCOE CHARTER SCHOOLS AT-A-GLANCE



During the 2015-2016 school year, SCCBOE considered one new countywide petition (Legacy Academy), renewed and approved six Petitions for Renewal and reviewed and approved two Material Revisions. For the current school year (2016-2017) the SCCBOE considered two new countywide and one SCCOE-Dependent charter petitions. The SCCBOE denied Options For Youth while approving Legacy Academy and Opportunity Youth Academy (OYA). The Board also reviewed and approved four Petitions for Renewal.

## 23 Charter Schools

## 9,345 Students Enrolled

### Authorized Grade Level

8	TK-5
3	TK-8
3	K-8
2	5-8
2	6-8
2	6-12
1	7-12
1	9-12
1	9+

2.5%	African American
12.6%	Asian
60.3%	Hispanic/Latino
11.3%	White
35.8%	English Learners
61.1%	Socioeconomically Disadvantaged

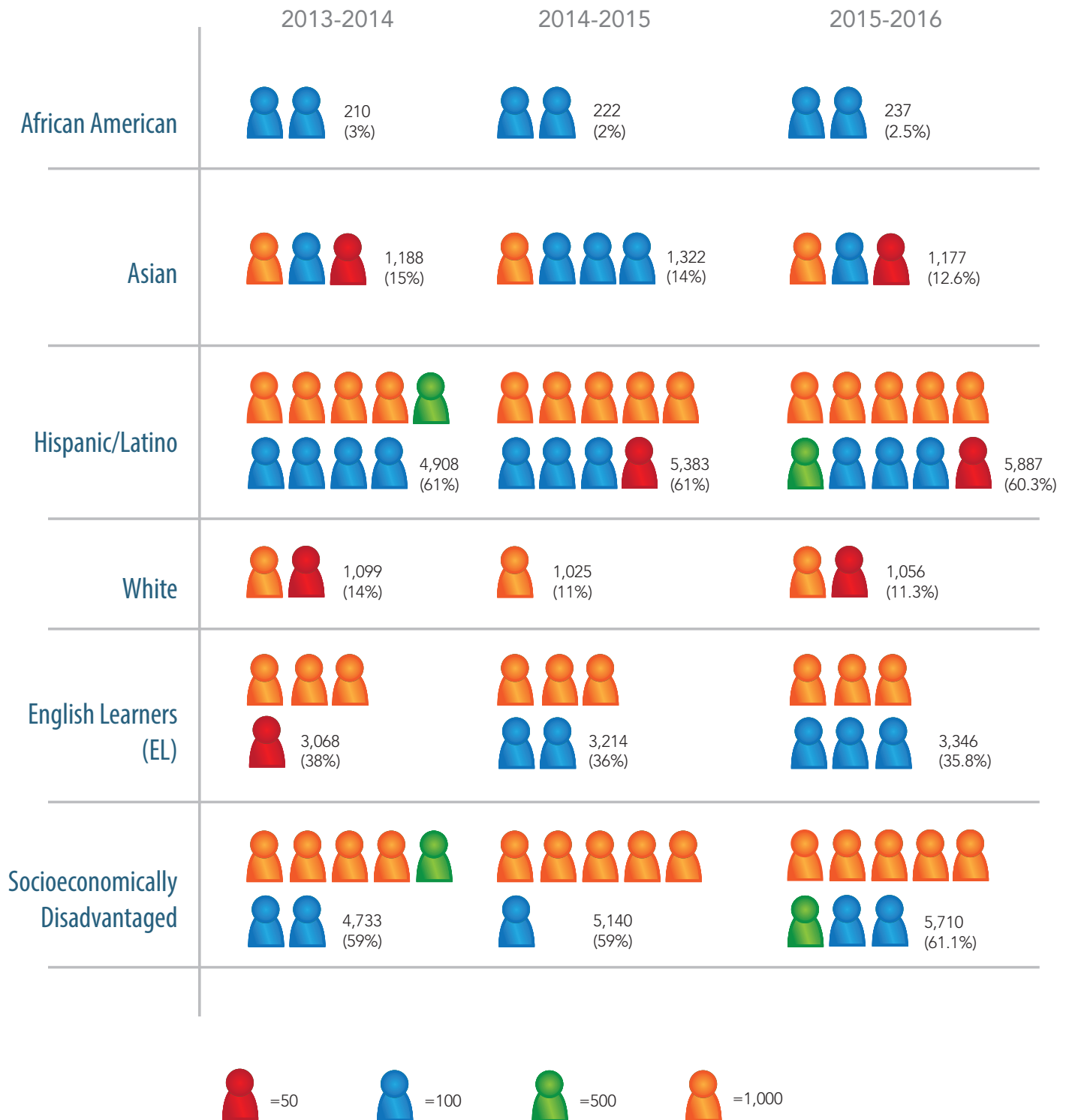
<b>Total Charter School Revenues</b>	\$100,530,334**
<b>Total Charter School Expenditures</b>	\$ 94,385,204**

Source: California Department of Education, available at <http://dq.cde.ca.gov/dataquest>

\*\*Refer to Chart on page 15 "2015-2016 School Financial Status"

# CHARTER SCHOOLS ENROLLMENT BY ETHNICITY

Charter school enrollment continues to reflect a significantly higher percentage of Hispanic students, English Learners, and students who are socioeconomically disadvantaged.



Source: California Department of Education, available at <http://dq.cde.ca.gov/dataquest>

# 2015-2016 CHARTER SCHOOL DEMOGRAPHICS

	Grades Served	Total Enrollment			African American		Asian		Hispanic/Latino		White		ELL		Economically Disadvantaged	
		14-15	15-16*	16-17**	2014	2015	2014	2015	2014	2015	2014	2015	2014	2015	2014	2015
		Total Enrollment			%		%		%		%		%		%	
Ace Empower Academy	5 to 8	404	351	359	0.0	0.6	2.5	1.4	95.0	96.3	0.0	0.6	44.1	52.7	96.5	95.2
Alpha José Hernández	6 to 8	168	328	435	0.6	0.9	6.5	5.8	91.7	91.5	0.0	0.0	53.0	54.3	96.4	97.0
Bullis Charter	K to 8	707	742	825	0.4	0.5	40.6	43.0	5.7	4.3	31.7	32.1	8.9	10.3	0.8	0.8
Discovery I	K to 8	557	563	552	2.7	2.5	23.5	25.2	11.5	11.9	27.5	29.7	18.7	13.1	6.6	6.4
Discovery II	TK to 8	362	444	523	0.8	3.2	11.0	14.9	19.9	15.3	33.4	41.4	12.2	6.3	6.1	7.7
DCP-Alum Rock	6 to 12	479	580	639	1.5	1.2	4.4	4.3	86.0	90.0	2.5	1.4	29.9	33.3	81.8	86.7
Leadership Public Schools	9 to 12	229	199	closed	2.6	2.0	2.2	2.0	89.5	89.9	1.7	1.0	34.5	34.2	90.4	88.4
Legacy Academy	6 to 8	N/A	N/A	N/A	N/A	N/A	N/A	N/A	N/A	N/A	N/A	N/A	N/A	N/A	N/A	N/A
Magnolia Science Academy	6 to 12	484	100	closed	5.8	12.0	57.0	51.0	12.0	13.0	19.4	12.0	7.2	6.0	16.7	34.0
Opportunity Youth Academy	Ages 16-24	N/A	N/A	201	N/A	N/A	N/A	N/A	N/A	N/A	N/A	N/A	N/A	N/A	N/A	N/A
Rocketship Alma	K to 5	613	562	526	2.8	3.4	9.0	6.8	83.8	85.1	1.0	0.9	47.3	45.6	90.5	92.5
Rocketship Brilliant Minds	TK to 5	502	584	604	1.4	0.9	11.4	13.4	83.3	80.7	0.6	0.5	61.2	56.5	89.8	84.6
Rocketship Discovery Prep	TK to 5	523	513	464	1.3	1.6	6.3	8.6	85.9	83.0	2.9	2.5	54.1	52.4	90.2	89.9
Rocketship Fuerza	TK to 5	498	589	612	1.6	1.0	10.0	9.2	85.1	84.9	0.8	0.8	61.6	50.6	85.7	82.2
Rocketship Los Sueños	K to 5	607	581	483	3.3	2.1	7.4	7.6	86.7	87.8	0.8	0.5	62.1	55.9	90.0	90.7
Rocketship Mateo Sheedy	K to 5	618	623	585	6.3	6.1	2.6	2.4	87.7	87.5	1.9	1.0	56.1	50.4	88.8	90.9
Rocketship Rising Stars	TK-4	N/A	N/A	499	N/A	N/A	N/A	N/A	N/A	N/A	N/A	N/A	N/A	N/A	N/A	N/A
Rocketship Sí Se Puede	K to 5	591	581	486	0.5	0.5	9.8	9.0	87.0	87.1	0.7	0.3	69.4	59.4	90.5	90.5
Spark Charter	K to 8	N/A	140	184	N/A	0.0	N/A	3.5	N/A	15.3	N/A	2.1	N/A	21.5	N/A	11.1
Silicon Valley Flex	6 to 12	327	232	closed	4.3	3.0	7.3	8.6	21.4	19.8	60.2	62.1	4.3	3.0	11.0	19.4
Summit Denali	6 to 12	207	320	404	1.4	1.6	20.8	19.3	39.1	38.3	28.5	27.4	11.1	12.5	29.0	34.9
Summit Tahoma	9 to 12	326	276	305	2.1	2.5	12.6	13.8	42.3	50.5	8.9	15.3	8.9	6.5	49.4	49.1
Sunrise Middle School	6 to 8	151	148	189	1.3	1.4	2.6	2.0	91.4	89.9	2.0	1.4	42.4	41.9	98.7	97.3
University Prep Academy	7 to 12	573	597	610	5.6	8.1	20.1	34.7	31.4	30.7	14.0	20.1	4.9	1.9	18.0	14.2
Voices Morgan Hill	TK to 2	N/A	84	136	N/A	0.0	N/A	2.4	N/A	76.0	N/A	6.0	N/A	79.8	N/A	75.0
Voices Mount Pleasant	TK to 2	N/A	103	168	N/A	2.9	N/A	0.0	N/A	58.7	N/A	1.9	N/A	75.0	N/A	66.3
		<b>8,926</b>	<b>9,345</b>	<b>9,959</b>	<b>2.3</b>	<b>2.5</b>	<b>13.4</b>	<b>12.6</b>	<b>61.8</b>	<b>60.3</b>	<b>11.9</b>	<b>11.3</b>	<b>34.6</b>	<b>35.8</b>	<b>61.3</b>	<b>61.1</b>

\*Source: California Department of Education, available at <http://dq.cde.ca.gov/dataquest> \*\*: as reported by individual charter schools for Spring 2017

# 2015-2016 SANTA CLARA DISTRICT DEMOGRAPHICS

District	Enrollment		African American		Asian		Hispanic/Latino		White		EL		Economically Disadvantaged	
	2014	2015	2014	2015	2014	2015	2014	2015	2014	2015	2014	2015	2014	2015
Alum Rock Union Elementary	12,386	12,068	1.45%	1.5%	11.7%	11.3%	78.8%	79.0%	1.8%	1.9%	47.4%	47.4%	87.3%	87.7%
Berryessa Union Elementary	7,758	7,452	1.72%	1.8%	48.5%	49.1%	24.2%	23.6%	5.2%	5.3%	34.5%	34.4%	37.5%	35.6%
Cambrian	3,378	3,358	2.74%	2.8%	16.7%	17.1%	25.0%	25.1%	46.9%	44.9%	15.0%	14.5%	20.8%	17.0%
Campbell Union	7,642	7,600	3.75%	3.7%	12.1%	12.6%	47.9%	47.9%	25.5%	24.4%	29.1%	31.2%	47.9%	44.5%
Campbell Union High	7,453	7,676	2.81%	2.9%	12.5%	12.6%	35.1%	34.5%	40.5%	41.7%	10.1%	9.3%	24.6%	24.2%
Cupertino Union	19,079	18,948	0.80%	0.7%	72.7%	73.1%	5.5%	5.1%	16.8%	16.2%	12.7%	10.7%	4.9%	4.3%
East Side Union High	26,760	26,684	2.60%	2.5%	29.4%	29.9%	51.5%	51.8%	6.3%	5.9%	19.6%	20.2%	57.8%	57.9%
Evergreen Elementary	12,857	12,282	1.17%	1.5%	53.3%	53.2%	26.8%	26.3%	6.7%	6.4%	23.2%	23.8%	35.2%	33.2%
Franklin-Mckinley Elementary	11,193	11,114	1.15%	1.4%	30.1%	30.3%	61.7%	61.2%	1.5%	1.5%	49.9%	48.6%	83.2%	81.6%
Fremont Union High	10,792	10,736	1.10%	1.1%	55.2%	56.1%	15.4%	15.9%	19.8%	19.3%	7.7%	7.7%	16.1%	14.7%
Gilroy Unified	11,840	11,852	1.10%	1.1%	3.9%	3.7%	71.1%	70.3%	18.7%	18.4%	29.1%	23.8%	56.3%	59.2%
Lakeside Joint	93	88	0.00%	0.0%	3.2%	5.7%	18.3%	19.3%	60.2%	52.2%	13.9%	20.5%	10.8%	7.9%
Loma Prieta Joint Union Elementary	496	491	0.40%	0.4%	4.1%	5.1%	7.6%	5.4%	79.5%	78.2%	4.8%	1.2%	5.0%	3.0%
Los Altos Elementary	4,675	4,638	0.50%	0.5%	29.9%	31.1%	5.8%	7.4%	50.1%	47.8%	12.3%	12.6%	4.8%	4.7%
Los Gatos Union Elementary	3,320	3,335	0.60%	0.5%	14.8%	15.8%	6.7%	7.1%	71.2%	68.6%	2.9%	3.9%	2.9%	2.2%
Los Gatos-Saratoga Joint Union High	3,302	3,311	0.30%	0.4%	29.9%	29.5%	7.3%	7.9%	52.5%	51.6%	1.4%	1.8%	3.2%	3.2%
Luther Burbank	552	528	2.50%	2.3%	0.9%	0.7%	92.3%	90.9%	1.9%	3.4%	75.2%	74.1%	99.0%	93.5%
Milpitas Unified	10,281	10,291	2.50%	2.2%	45.0%	46.1%	20.6%	20.7%	6.7%	6.6%	27.5%	27.4%	35.1%	34.9%
Moreland	4,825	4,810	2.70%	2.5%	25.1%	26.8%	33.5%	32.6%	28.1%	27.1%	28.6%	30.2%	35.1%	30.1%
Morgan Hill Unified	9,000	9,135	2.10%	1.9%	8.0%	8.1%	50.0%	50.1%	34.3%	33.3%	19.6%	16.6%	37.9%	39.9%
Mountain View Whisman	5,065	5,084	1.60%	1.6%	11.9%	12.9%	43.5%	41.6%	29.2%	28.9%	32.1%	28.8%	39.3%	37.3%
Mountain View-Los Altos Union High	3,881	4,028	1.70%	1.4%	20.9%	21.9%	25.9%	26.1%	45.3%	44.6%	8.8%	8.9%	21.5%	18.1%
Mt. Pleasant Elementary	2,502	2,445	2.30%	2.3%	13.8%	14.3%	70.1%	73.5%	3.2%	3.0%	47.8%	47.1%	77.1%	83.1%
Oak Grove Elementary	10,921	10,632	4.10%	3.8%	19.5%	20.1%	48.5%	47.7%	18.8%	18.4%	29.2%	29.1%	46.6%	45.9%
Orchard Elementary	890	908	3.50%	3.2%	35.7%	36.1%	38.7%	37.8%	5.7%	5.3%	43.8%	42.9%	58.3%	55.0%
Palo Alto Unified	12,527	12,485	2.23%	2.0%	34.3%	35.2%	11.3%	11.5%	42.6%	41.3%	11.0%	10.3%	8.9%	8.5%
San José Unified	32,938	32,454	2.91%	2.7%	12.7%	12.9%	53.1%	53.3%	24.8%	24.2%	23.1%	22.0%	46.5%	47.1%
Santa Clara Unified	15,298	15,388	3.32%	3.0%	25.0%	26.4%	36.5%	35.7%	21.5%	21.2%	28.2%	25.4%	42.5%	41.2%
Saratoga Union Elementary	2,069	2,000	0.10%	0.1%	54.9%	55.8%	4.1%	3.5%	31.9%	30.4%	5.9%	5.7%	1.1%	1.0%
Sunnyvale	6,787	6,640	2.12%	1.6%	26.3%	27.5%	33.9%	31.6%	21.6%	22.9%	36.4%	36.2%	41.3%	38.7%
Union Elementary	5,533	5,692	1.54%	1.4%	17.5%	21.1%	16.3%	15.6%	50.2%	50.7%	12.5%	13.5%	11.9%	1.9%
<b>Santa Clara County</b>	<b>276,689</b>	<b>274,948</b>	<b>2.10%</b>	<b>2.0%</b>	<b>28.0%</b>	<b>28.5%</b>	<b>39.1%</b>	<b>38.9%</b>	<b>20.9%</b>	<b>20.1%</b>	<b>24.1%</b>	<b>23.3%</b>	<b>40.2%</b>	<b>39.6%</b>

Source: California Department of Education, available at <http://dq.cde.ca.gov/dataquest>

# 2015-2016 STUDENT PERFORMANCE

Based on the Local Control Funding Formula (LCFF), which was passed in 2013, California has a new accountability system that is based on multiple measures. These measures are used to determine local educational agency (LEA) and school progress toward meeting the needs of their students. The measures are based on factors that contribute to a quality education, including high school graduation rates, college/career readiness, student test scores, English Learner (EL) progress, suspension rates, and parent engagement. Performance on these multiple measures will be reported through the new California School Dashboard. The tables below reflect the year to year student performance in ELA and Math on the Smarter Balanced Summative Assessments for the past two year.

## ENGLISH LANGUAGE ARTS

School	ALL		Economically Disadvantaged		ELL		Hispanic/Latino	
	14-15	15-16	14-15	15-16	14-15	15-16	14-15	15-16
	% met/exceed standards		% met/exceed standards		% met/exceed standards		% met/exceed standards	
Ace Empower Academy	11	23	10	23	3	8	9	23
Alpha Public Schools: José Hernández Middle School	25	34	25	34	9	16	23	32
Bullis Charter School	95	96	**	**	72	69	83	87
Discovery Charter School I	66	71	43	37	50	24	45	45
Discovery Charter School II	56	57	**	40	**	**	41	42
Downtown College Prep (DCP); Alum Rock	31	35	29	32	5	10	27	32
Opportunity Youth Academy* (OYA)	N/A	N/A	N/A	N/A	N/A	N/A	N/A	N/A
Rocketship Alma	41	37	37	35	19	15	40	34
Rocketship Brilliant Minds	24	36	22	31	17	14	25	25
Rocketship Discovery Prep	30	48	30	46	17	26	28	45
Rocketship Fuerza	35	40	30	36	23	25	28	37
Rocketship Los Sueños	26	30	23	30	11	13	21	26
Rocketship Mateo Sheedy	36	44	34	43	24	29	35	42
Rocketship Rising Stars*	N/A	N/A	N/A	N/A	N/A	N/A	N/A	N/A
Rocketship Sí Se Puede	30	38	29	36	19	20	26	32
Spark Charter School	N/A	73	N/A	**	N/A	**	N/A	31
Summit Public School: Denali	63	67	33	34	20	15	36	39
Summit Public School: Tahoma	81	81	77	74	**	**	76	76
Sunrise Middle School	24	38	24	38	8	20	22	37
University Prep Academy	83	78	72	73	**	**	69	63
Alum Rock Union School District	33	37	29	34	12	14	27	31
San José Unified School District	51	54	29	33	5	11	31	35
East Side Union High School District	61	62	45	42	7	8	43	46
Morgan hill Unified School District	50	52	28	31	12	11	33	36
Santa Clara County	58	62	33	38	18	19	33	37
CALIFORNIA STATE	44	49	31	35	11	13	32	37

\* Opened Fall 2016

\*\* 10 or fewer students with valid test scores

Source: <http://caaspp.cde.ca.gov/sb2015/>

# 2015-2016 STUDENT PERFORMANCE

## MATHEMATICS

School	ALL		Economically Disadvantaged		ELL		Hispanic/Latino	
	14-15	15-16	14-15	15-16	14-15	15-16	14-15	15-16
	% met/exceed standards		% met/exceed standards		% met/exceed standards		% met/exceed standards	
Ace Empower Academy	11	19	8	19	2	7	9	19
Alpha Public Schools: José Hernández Middle School	20	26	19	25	8	15	17	22
Bullis Charter School	95	97	**	**	86	88	80	87
Discovery Charter School I	67	72	31	40	43	43	39	42
Discovery Charter School II	45	51	**	26	**	**	18	24
Downtown College Prep (DCP); Alum Rock	24	28	22	25	4	12	21	25
Opportunity Youth Academy* (OYA)	N/A	N/A	N/A	N/A	N/A	N/A	N/A	N/A
Rocketship Alma	47	56	43	55	28	33	43	54
Rocketship Brilliant Minds	52	46	49	43	39	30	49	41
Rocketship Discovery Prep	44	55	43	54	27	27	42	52
Rocketship Fuerza	45	44	40	38	41	30	39	40
Rocketship Los Sueños	39	34	37	34	23	21	34	31
Rocketship Mateo Sheedy	44	43	43	42	30	33	42	42
Rocketship Rising Stars*	N/A	N/A	N/A	N/A	N/A	N/A	N/A	N/A
Rocketship Sí Se Puede	44	53	43	51	36	41	41	47
Spark Charter School	N/A	65	N/A	**	N/A	**	N/A	23
Summit Public School: Denali	56	60	28	23	20	18	29	25
Summit Public School: Tahoma	38	31	29	22	**	**	19	22
Sunrise Middle School	13	21	13	20	3	15	11	20
University Prep Academy	67	67	48	46	**	**	43	37
Alum Rock Union School District	24	28	21	25	12	13	19	22
San José Unified School District	39	42	17	20	5	8	18	21
East Side Union High School District	39	39	21	28	8	9	17	16
Morgan hill Unified School District	40	41	20	21	13	12	24	26
Santa Clara County	52	56	25	29	20	22	23	26
CALIFORNIA STATE	33	37	21	23	11	12	21	24

\* Opened Fall 2016

\*\* 10 or fewer students with valid test scores

Source: <http://caaspp.cde.ca.gov/sb2015/>



# 2015-2016 CHARTER SCHOOL INFORMATION

This information reflects the performance on the multiple measures through the new California School Dashboard for SCCOE authorized charter schools. The new accountability system reflects a clear expectation that all LEAs and schools can and should improve and emphasizes equity by focusing on student group performance. This new multiple measures system replaces the former Academic Performance Index (API), which was based solely on testing results, and the federal requirement to calculate Adequate Yearly Progress (AYP).

School	Basics Priority 1	State Standards Priority 2	Parent Engagement Priority 3	Achievement Priority 4			Pupil Engagement Priority 5		School Climate Priority 6		Access Priority 7	Outcomes Priority 8
	LOCAL	LOCAL	LOCAL	ELA	Math	EL	Grad Rate	Chronic Absence	Suspension Rate	LOCAL	College Career	College Career
ACE Empower Academy	N/A	N/A	N/A	0	0	0	N/A	N/A	4	N/A	N/A	N/A
Alpha Public Schools: José Hernández Middle School	N/A	N/A	N/A	0	1		N/A	N/A	N/A	N/A	N/A	N/A
Bullis Charter School	N/A	N/A	N/A	0	0	N/A	N/A	N/A	0	N/A	N/A	N/A
Discovery Charter School I	N/A	N/A	N/A	2	1	0	N/A	N/A	4	N/A	N/A	N/A
Discovery Charter School II	N/A	N/A	N/A	0	0	N/A	N/A	N/A	0	N/A	N/A	N/A
Downtown College Prep (DCP): Alum Rock	N/A	N/A	N/A	0	3	0	N/A	N/A	0	N/A	N/A	N/A
Legacy Academy*	N/A	N/A	N/A	N/A	N/A	N/A	N/A	N/A	N/A	N/A	N/A	N/A
Opportunity Youth Academy** (OYA)	N/A	N/A	N/A	N/A	N/A	N/A	N/A	N/A	N/A	N/A	N/A	N/A
Rocketship Alma Academy	N/A	N/A	N/A	3	0	0	N/A	N/A	4	N/A	N/A	N/A
Rocketship Brilliant Minds	N/A	N/A	N/A	0	3	0	N/A	N/A	2	N/A	N/A	N/A
Rocketship Discovery Prep	N/A	N/A	N/A	0	0	0	N/A	N/A	4	N/A	N/A	N/A
Rocketship Fuerza	N/A	N/A	N/A	0	1	N/A	N/A	N/A	N/A	N/A	N/A	N/A
Rocketship Los Sueños	N/A	N/A	N/A	0	3	0	N/A	N/A	3	N/A	N/A	N/A
Rocketship Mateo Sheedy	N/A	N/A	N/A	0	0	0	N/A	N/A	1	N/A	N/A	N/A
Rocketship Rising Stars**	N/A	N/A	N/A	N/A	N/A	N/A	N/A	N/A	N/A	N/A	N/A	N/A
Rocketship Sí Se Puede	N/A	N/A	N/A	0	0	0	N/A	N/A	0	N/A	N/A	N/A
Spark Charter School	N/A	N/A	N/A	N/A	N/A		N/A	N/A		N/A	N/A	N/A
Summit Public Schools: Denali	N/A	N/A	N/A	3	3		N/A	N/A	2	N/A	N/A	N/A
Summit Public Schools: Tahoma	N/A	N/A	N/A			N/A	N/A	N/A	0	N/A	N/A	N/A
Sunrise Middle School	N/A	N/A	N/A	0	0	0	N/A	N/A	0	N/A	N/A	N/A
University Prep	N/A	N/A	N/A	1	1	N/A	0	N/A	1	N/A	N/A	N/A
Voices College Bound Language Art Academy at Morgan Hill	N/A	N/A	N/A	N/A	N/A	N/A	N/A	N/A	N/A	N/A	N/A	N/A
Voices College Bound Language Academy at Mt. Pleasant	N/A	N/A	N/A	N/A	N/A	N/A	N/A	N/A	N/A	N/A	N/A	N/A

\* Opens 2018-2019

\*\* Opens 2016-2017

<https://www.caschooldashboard.org/#/Home>

Student Group Report Shows the performance of all students and each student group on the state indicators. Cell number is number of student subgroups in the red/orange performance levels against performance levels for ALL students (indicated by colors) • Blue/Green (i.e., meeting and exceeding standards) • Yellow (near) • Red/Orange (Below)

# 2015-2016 DISTRICT INFORMATION

This information reflect the performance on the multiple measures through the new California School Dashboard for the local school districts. The new accountability system reflects a clear expectation that all LEAs and schools can and should improve and emphasizes equity by focusing on student group performance. This new multiple measures system replaces the former Academic Performance Index (API), which was based solely on testing results, and the federal requirement to calculate Adequate Yearly Progress (AYP).

School	Basics Priority 1	State Standards Priority 2	Parent Engagement Priority 3	Achievement Priority 4			Pupil Engagement Priority 5		School Climate Priority 6		Access Priority 7	Outcomes Priority 8
	LOCAL	LOCAL	LOCAL	ELA	Math	EL	Grad Rate	Chronic Absence	Suspension Rate	LOCAL	College Career	College Career
Alum Rock Union Elementary	N/A	N/A	N/A	1	2	0	N/A	N/A	10	N/A	N/A	N/A
Berryessa Union Elementary	N/A	N/A	N/A	0	0	0	N/A	N/A	7	N/A	N/A	N/A
Cambrian	N/A	N/A	N/A	0	0	1	N/A	N/A	0	N/A	N/A	N/A
Campbell Union	N/A	N/A	N/A	4	5	1	N/A	N/A	2	N/A	N/A	N/A
Campbell Union	N/A	N/A	N/A	N/A	N/A	0	1	N/A	2	N/A	N/A	N/A
Cupertino Union	N/A	N/A	N/A	0	0	0	N/A	N/A	3	N/A	N/A	N/A
East Side Union High	N/A	N/A	N/A	N/A	N/A	0	2	N/A	2	N/A	N/A	N/A
Evergreen Elementary	N/A	N/A	N/A	1	0	1	N/A	N/A	1	N/A	N/A	N/A
Franklin-McKinley Elementary	N/A	N/A	N/A	1	0	0	N/A	N/A	1	N/A	N/A	N/A
Fremont Union High	N/A	N/A	N/A	N/A	N/A	0	0	N/A	1	N/A	N/A	N/A
Gilroy Unified	N/A	N/A	N/A	1	1	0	0	N/A	0	N/A	N/A	N/A
Lakeside Joint	N/A	N/A	N/A	0	0	N/A	N/A	N/A	N/A	N/A	N/A	N/A
Loma Prieta Joint Union Elementary	N/A	N/A	N/A	0	0	0	N/A	N/A	2	N/A	N/A	N/A
Los Altos Elementary	N/A	N/A	N/A	0	0	0	N/A	N/A	1	N/A	N/A	N/A
Los Gatos Union Elementary	N/A	N/A	N/A	0	0	0	N/A	N/A	1	N/A	N/A	N/A
Los Gatos-Saratoga Joint Union High	N/A	N/A	N/A	N/A	N/A	N/A	0	N/A	2	N/A	N/A	N/A
Luther Burbank	N/A	N/A	N/A	1	1	1	N/A	N/A	N/A	N/A	N/A	N/A
Milpitas Unified	N/A	N/A	N/A	0	0	0	0	N/A	4	N/A	N/A	N/A
Moreland	N/A	N/A	N/A	0	0	0	N/A	N/A	0	N/A	N/A	N/A
Morgan Hill Unified	N/A	N/A	N/A	1	2	0	1	N/A	2	N/A	N/A	N/A
Mt. Pleasant Elementary	N/A	N/A	N/A	1	1	0	N/A	N/A	6	N/A	N/A	N/A
Mountain View Whisman Elementary School District	N/A	N/A	N/A	0	0	0	N/A	N/A	1	N/A	N/A	N/A
Mountain View-Los Altos Union High	N/A	N/A	N/A	N/A	N/A	0	0	N/A	4	N/A	N/A	N/A
Orchard Elementary	N/A	N/A	N/A	1	0	0	N/A	N/A	N/A	N/A	N/A	N/A
Palo Alto Unified	N/A	N/A	N/A	1	4	0	1	N/A	1	N/A	N/A	N/A
San José Unified	N/A	N/A	N/A	2	2	0	1	N/A	1	N/A	N/A	N/A
Santa Clara Unified	N/A	N/A	N/A	1	0	0	5	N/A	6	N/A	N/A	N/A
Saratoga Union Elementary	N/A	N/A	N/A	0	1	0	N/A	N/A	0	N/A	N/A	N/A
Sunnyvale	N/A	N/A	N/A	1	2	0	N/A	N/A	3	N/A	N/A	N/A
Union Elementary	N/A	N/A	N/A	0	0	0	N/A	N/A	5	N/A	N/A	N/A

<https://www.caschooldashboard.org/#/Home>

Student Group Report Shows the performance of all students and each student dash on the state indicators. Cell number is number of student subgroups in the red/orange performance levels against performance levels for ALL students (indicated by colors) • Blue/Green (i.e., meeting and exceeding standards) • Yellow (near) • Red/Orange (Below)

# SPECIAL EDUCATION: STUDENTS WITH INDIVIDUALIZED EDUCATIONAL PLANS (IEP) ENROLLED IN SCCOE CHARTER SCHOOLS 2015-2016

As public schools, charter schools are required to enroll and serve students with disabilities in the same manner as traditional public schools. In 2015-2016 seven charter schools used the SCCOE for special education purposes, with the delivery of special education services coordinated and monitored by the SCCOE. The remaining fourteen schools are Local Education Agencies (LEAs) for special education purposes and members of the El Dorado Charter Special Education Local Plan Area (SELPA), which is directly responsible for special education services with oversight by the El Dorado SELPA. Two charter schools are LEAs for special education services with oversight by the Sonoma County Office of Education. Overall, 633 students with IEPs (8.0%) were in charter schools. The percentage of students with IEPs enrolled in these schools ranges from a high of 23% at Silicon Valley Flex (closed 6/2016), to a low of 2.4% at University Prep Academy.

School	Grades	2015-2016 Enrollment (3)	Students with IEPs		District Comparisons (Students with IEP)	
			Number <sup>1</sup>	Percent <sup>4</sup>	District	Percent <sup>4</sup>
Bullis Charter School	6 to 8	742	32	4.3	Los Altos	8.9
Discovery Charter I	K to 8	563	68	12	Moreland	9.5
Discovery Charter II	K-8	444	60	13.5	San Jose	9.4
Downtown College Prep (DCP)-Alum Rock	6 to 12	580	52	9	Alum Rock	11.5
Spark Charter School	K-8	140	N/A	7	Sunnyvale	8.5
University Prep Academy	7 to 12	597	14	2.4	SJUSD	9.4
<b>SubTotal (SCCOE Spe. Ed.)<sup>1</sup></b>		<b>3,162</b>	<b>191</b>	<b>6.97</b>		
Ace Empower Academy	6 to 12	351	53	15	Alum Rock	11.5
Alpha Public Schools: José Hernández Middle School	K to 8	328	35	11	Alum Rock	11.5
Rocketship Alma Academy	K to 5	562	39	7	SJUSD	10.1
Rocketship Brilliant Minds	TK to 5	584	51	9	Alum Rock	11.5
Rocketship Discovery Prep	K to 5	513	42	8	SJUSD	10.1
Rocketship Fuerza	TK to 5	589	37	6	Alum Rock	11.5
Rocketship Los Sueños	K to 5	581	31	5	Alum Rock	11.5
Rocketship Mateo Sheedy	K to 5	623	34	5	SJUSD	10.1
Rocketship Sí Se Puede	K to 5	581	37	4	Alum Rock	11.5
Silicon Valley Flex	6 to 12	232	53	23	Morgan Hill	10.9
Summit Public Schools: Denali	6 to 12	320	38	11.1	Sunnyvale	10.1
Summit Public Schools: Tahoma	9 to 12	276	36	8.2	East Side	9.1
Sunrise Middle School	6 to 8	148	15	13.2	SJUSD	10.1
<b>SubTotal (El Dorado SELPA)<sup>2</sup></b>		<b>5,887</b>	<b>524</b>	<b>9.82</b>		
Voices College Bound Language Art Academy at Morgan Hill	TK to 1	84	7	8	MHUSD	10.9
Voices College Bound Language Academy at Mt. Pleasant	TK to 1	103	7	7	Mt. Pleasant	14.1
<b>SubTotal (Sonoma COE SELPA)<sup>2</sup></b>		<b>187</b>	<b>14</b>	<b>7.5</b>		
<b>Total Enrolled</b>		<b>9,345</b>	<b>633</b>	<b>7.8</b>	Santa Clara and California Total include students from pre-school to ages 22 in the calculation of % age of eligible special education students.	
<b>Santa Clara County Total</b>		<b>286,681</b>	<b>27,846</b>	<b>9.71</b>		
<b>California Total</b>		<b>6,235,520</b>	<b>71,7961</b>	<b>11.51</b>		

<sup>1</sup>SCCOE SELPA - Dec. 1, 2016 Report

<sup>2</sup>El Dorado Charter SELPA - Dec. 1, 2016 CASEMIS Report  
Sonoma County Charter SELPA - Dec 1, 2016 CASEMIS Report

<sup>3</sup>CDE/dataquest - 2015-2016 Enrollment

<sup>4</sup>CDE/dataquest - calculated by SCCOE

# CHARTER SCHOOL SUSPENSION & EXPULSION REPORT 2015-2016

This report provides an unduplicated count of students involved in one or more incidents during the academic year and were subsequently suspended or expelled from school. In calculating suspension/expulsion, students who were suspended/expelled multiple times are only counted once in the totals.

School	Grades	2014-2015 Enrollment	2015-16 Enrollment	2014-2015*		2015-16**	
				Suspension Rate	Expulsion Rate	Suspension Rate	Expulsion Rate
Ace Empower Academy	6 to 8	404	351	17.5	0	11.5	0
Alpha Public Schools: José Hernández Middle School	6 to 8	168	328	6.1	0	7.5	0.6
Bullis Charter School	K to 8	707	742	0	0	0	0
Discovery Charter I	K to 8	557	563	0.7	0	0.7	0
Discovery Charter II	TK to 8	362	444	0.6	0	0.6	0
Downtown College Prep (DCP): Alum Rock	6 to 12	479	580	4.7	0	9.2	0.2
Leadership Public Schools	9 to 12	229	199	7.4	0	7.4	0
Legacy Academy	6 to 8	N/A	N/A	N/A	N/A	N/A	N/A
Magnolia Science Academy	6 to 12	484	100	2.6	0	2.6	0
Opportunity Youth Academy (OYA)	Ages 16-24	N/A	N/A	N/A	N/A	N/A	N/A
Rocketship Alma	K to 5	613	562	1.3	0	0.7	0
Rocketship Brilliant Minds	TK to 5	502	584	1.1	0	0.5	0
Rocketship Discovery Prep	K to 5	523	513	2.5	0	4.5	0
Rocketship Fuerza	TK to 5	498	589	0.4	0	0.8	0
Rocketship Los Sueños	K to 5	607	581	2.5	0	2.7	0
Rocketship Mateo Sheedy	K to 5	618	623	0.7	0	2.4	0
Rocketship Rising Stars	TK to 4	N/A	N/A	N/A	N/A	N/A	N/A
Rocketship Sí Se Puede	K to 5	591	581	0	0	1.4	0
Silicon Valley Flex	6 to 12	327	232	0	0	0	0
Spark Charter School	K to 8	N/A	140	0	0	N/A	N/A
Summit Public Schools: Denali	6 to 12	207	320	4	0	3.6	0.3
Summit Public Schools: Tahoma	9 to 12	326	276	6	1.8	3.1	0.3
Sunrise Middle School	6 to 8	151	148	12	7.1	9.8	0
University Prep Academy	7 to 12	573	597	4	0.7	0	0
Voices College Bound Language Art Academy at Morgan Hill	TK to 2	N/A	84	N/A	N/A	0	0
Voices College Bound Language Academy at Mt. Pleasant	TK to 2	N/A	103	N/A	N/A	A	0
<b>SCCOE AUTHORIZED CHARTER SCHOOLS TOTAL</b>		<b>8,926</b>	<b>9,345</b>	<b>3.4</b>	<b>0</b>	<b>3.1</b>	<b>0</b>
<b>Santa Clara County Total</b>			<b>276,689</b>	<b>2.5</b>	<b>0.1</b>	<b>2.5</b>	<b>0.1</b>
<b>California Total</b>			<b>6,418,044</b>	<b>3.8</b>	<b>0.1</b>		

\* <http://data1.cde.ca.gov/dataquest/>

\*\* <https://www.caschooldashboard.org/#/Home>

Source: California Department of Education, available at <http://dq.cde.ca.gov/dataquest>

# 2015-2016 CHARTER SCHOOL FINANCIAL STATUS

State public funding of charter schools in 2015-16 was on average \$7,804/Average Daily Attendance (ADA) (LCFF Base Grant range of \$7,189 – \$8,801). Each school's total revenues per student varied depending on federal, lottery, grants, donations and other local revenues received. Information below comes from the 2015-16 independent Audit Reports for the respective Charters open for the full fiscal year and their Districts of physical location.

School	ADA	Revenues	Expenditures	Change in Net Assets	Beginning Net Assets	Ending Net Assets	Expenditures/ADA	District of Physical Location	District General Fund Expenditures/ADA	Expenditures/ADA \$ Difference
ACE Empower Academy	331.82	\$4,277,431	\$4,575,309	(\$297,878)	\$1,185,155	\$887,277	\$13,789	Alum Rock Union Elementary School District	\$12,336	\$1,453
Alpha Public Schools: José Hernández Middle School	299.58	\$3,601,720	\$3,044,716	\$557,004	\$168,435	\$725,439	\$10,163	Alum Rock Union Elementary School District	\$12,336	(\$2,173)
Bullis Charter School	719.31	\$9,648,004	\$9,577,882	\$70,122	\$1,027,361	\$1,097,483	\$13,315	Los Altos School District	\$12,597	\$718
Discovery Charter School I	540.73	\$5,694,137	\$5,394,150	\$299,987	\$2,587,748	\$2,887,735	\$9,976	Moreland School District	\$13,474	(\$3,498)
Discovery Charter School II	423.30	\$4,303,634	\$4,234,239	\$69,395	(\$174,005)	(\$104,610)	\$10,167	San José Unified School District	\$11,338	(\$1,171)
Downtown College Prep - Alum Rock	551.98	\$6,345,831	\$5,612,568	\$733,263	\$1,090,128	\$1,823,391	\$10,168	Alum Rock Union Elementary School District	\$12,336	(\$2,168)
Rocketship Alma <sup>1</sup>	531.63	\$6,399,703	\$5,850,471	\$549,232	\$1,435,465	\$1,984,697	\$11,005	San José Unified School District	\$11,338	(\$333)
Rocketship Brilliant Minds <sup>1</sup>	554.43	\$7,250,917	\$6,705,370	\$545,547	(\$107,954)	\$437,593	\$12,094	Alum Rock Union Elementary School District	\$12,336	(\$242)
Rocketship Discovery Prep <sup>1</sup>	476.38	\$6,037,491	\$6,102,050	(\$64,559)	\$607,316	\$542,757	\$12,809	San José Unified School District	\$11,338	\$1,471
Rocketship Fuerza	605.57	\$7,100,188	\$6,877,194	\$222,994	(\$953,898)	(\$730,904)	\$11,357	Alum Rock Union Elementary School District	\$12,336	(\$979)
Rocketship Los Sueños <sup>1</sup>	555.40	\$7,246,414	\$6,595,504	\$650,910	\$1,622,471	\$2,273,381	\$11,875	Alum Rock Union Elementary School District	\$12,336	(\$461)
Rocketship Mateo Sheedy	593.69	\$7,106,540	\$6,496,478	\$610,062	\$1,825,755	\$2,435,817	\$10,943	San José Unified School District	\$11,338	(\$395)
Rocketship Si Se Puede	484.94	\$7,142,225	\$6,223,607	\$918,618	\$2,064,065	\$2,982,683	\$12,834	Alum Rock Union Elementary School District	\$12,336	\$498
Spark Charter School	138.05	\$1,635,674	\$1,495,913	\$139,761	(\$9,945)	\$129,816	\$10,836	Sunnyvale Elementary School District	\$10,987	(\$151)
Summit Public Schools: Denali <sup>1</sup>	310.46	\$3,308,037	\$3,263,259	\$44,778	\$7,882	\$102,660	\$10,511	Fremont Union High School District	\$12,500	(\$1,989)
Summit Public Schools: Tahoma	265.54	\$3,084,119	\$3,026,293	\$57,826	\$518,721	\$576,547	\$11,397	East Side Union High School District	\$11,727	(\$330)
Sunrise Middle School	144.43	\$1,834,541	\$1,630,506	\$204,035	\$335,821	\$539,856	\$11,289	San José Unified School District	\$11,338	(\$49)
University Prep Academy <sup>1</sup>	576.43	\$5,841,480	\$5,071,865	\$769,615	\$1,136,916	\$1,906,531	\$8,799	San José Unified School District	\$11,338	(\$2,539)
Voices College Bound Language Art Academy at Morgan Hill	77.93	\$1,202,090	\$1,107,090	\$95,000	(\$9,072)	\$85,928	\$14,206	Morgan Hill Unified School District	\$9,740	\$4,466
Voices College Bound Language Academy at Mt Pleasant <sup>2</sup>	92.40	\$1,414,732	\$1,400,752	\$13,980	\$0	\$13,980	\$15,160	Mt. Pleasant Elementary School District	\$15,298	(\$138)
<b>Total</b>		<b>\$100,474,908</b>	<b>\$94,285,216</b>							

<sup>1</sup> Countywide  
<sup>2</sup> First year with students 2015-16



# ACE EMPOWER ACADEMY

PRINCIPAL: VU LONG TRINH • CMO: ACE CHARTER SCHOOLS

Academic Year 2016-2017 • Current Grade Span: 5-8

## Fast Facts

District Appeal or Countywide:	District Appeal (ARUSD)
Authorization Date by SCCBOE:	2007
Opened:	2008
Renewal(s):	2016
Current Charter Term:	2016-2021

Data Reported by School, Spring 2017

## Financial Data

Average Teacher Salary	\$63,775
Average Classified Staff Salary	\$56,298
Average Per Pupil Cost	\$12,733
CMO Rate	10%
CMO Fee	\$394,147
Facility Cost	\$484,992
Facility - Leased/Owned	Owned
Offers Retirement Benefits	Yes
Participates in STRS	Yes
Participates in PERS	No
Other Retirement Benefits	401K For Classified Employees
Annual Teacher Attrition Rate	29%
Teachers Not Returning/Total Teachers	6/21



**359**  
Students Enrolled

## Number of:

Students on Wait List	0
EL Students	199/55%
Students with IEPs	69/19%
FRL Students	333/93%
Students from Local District	267/74%

Annual Attrition Rate (Students) 26% (59/227)  
(number of students who could return but did not/number of students who could have returned)

**16**

TEACHERS

African American	3
Asian	2
Caucasian	4
Hispanic/Latino	4
Other	3
Average Tenure Teaching	5.4
Average Tenure at Site	2.4

**3**

ADMINISTRATORS

African American	0
Asian	2
Caucasian	0
Hispanic/Latino	1
Other	0
Years at Site	1.5

**9.75**

OTHER SUPPORT STAFF

African American	1
Asian	0
Caucasian	0
Hispanic/Latino	8.75
Other	0
Average Tenure at Site	3.76

## ACE EMPOWER ACADEMY

625 S. Sunset Ave. • San José, CA 95116 • Phone: 408-729-3920 • E-mail: [vtrinh@acecharter.org](mailto:vtrinh@acecharter.org)



# ALPHA PUBLIC SCHOOLS: JOSÉ HERNÁNDEZ MIDDLE SCHOOL

PRINCIPAL: SAMANTHA HANLON • CMO: ALPHA PUBLIC SCHOOLS



Academic Year 2016-2017 • Current Grade Span: 5-8

## Fast Facts

District Appeal or Countywide:	District Appeal (ARUSD)
Authorization Date by SCCBOE:	2013
Opened:	2014
Renewal(s):	N/A
Current Charter Term:	2014-2017

## Financial Data

Average Teacher Salary	\$54,250
Average Classified Staff Salary	\$39,000
Average Per Pupil Cost	\$10,168
CMO Rate	15%
Facility Cost	\$6.88/sf - Dedicated Space \$3.44/sf - Shared Space
Facility - Leased/Owned	Leased
Offers retirement benefits	Yes
Participates in STRS	No
Participates in PERS	No
Other Retirement Benefits	403B retirement for staff Match up to 5% of base salary
Annual Teacher Attrition Rate	31%
Teachers Not Returning/Total Teachers	4/13

Data Reported by School, Spring 2017

**435**  
Students Enrolled

## Number of:

Students on Wait List	0
EL Students	245 - 56.32%
Students with IEPs	51 - 11.72%
FRL Students	419 - 96.32%
Students from Local District	56%
Annual Attrition Rate (Students)	27%
(number of students who could return but did not/number of students who could have returned)	



**15**

TEACHERS

African American	0
Asian	2
Caucasian	8
Hispanic/Latino	3
Other	0
Average Tenure Teaching	2
Average Tenure at Site	0-1

**2**

ADMINISTRATORS

African American	1
Asian	0
Caucasian	1
Hispanic/Latino	0
Other	0
Years at Site	0-1

**12**

OTHER SUPPORT STAFF

African American	1
Asian	0
Caucasian	0
Hispanic/Latino	10
Other	1
Average Tenure at Site	0-1

## ALPHA PUBLIC SCHOOLS: JOSÉ HERNÁNDEZ MIDDLE SCHOOL

1601 Cunningham Ave. • San José, CA 95112 • Phone: 408-780-1551 (ext. 303) • shanlon@alphapublicschools.org



# BULLIS CHARTER SCHOOL

PRINCIPAL: CYNTHIA BRICTSON • CMO: NONE

Academic Year 2016-2017 • Current Grade Span: K-8

## Fast Facts

District Appeal or Countywide:	District Appeal (LASD)
Authorization Date by SCCBOE:	2003
Opened:	2004
Renewal(s):	2007, 2016
Current Charter Term:	2017-2022

## Financial Data

Average Teacher Salary	\$65,888
Average Classified Staff Salary	\$63,710
Average Per Pupil Cost	\$12,408
Facility Cost	\$228,953
Facility - Leased/OwnedProp	39
Offers retirement benefits	No
Participates in STRS	Yes
Participates in PERS	No
Other Retirement Benefits	No
Annual Teacher Attrition Rate	17%

Data Reported by School, Spring 2017



**825**  
Students Enrolled

## Number of:

Students on Wait List	1,077
EL Students	90 (10.91%)
Students with IEPs	53 (6.42%)
FRL Students	6 (0.73%)
Students from Local District	780 (94.54%)
Annual Attrition Rate (Students)	62 (8.91%)
(number of students who could return but did not/number of students who could have returned)	

**59**

TEACHERS

African American	0
Asian	11
Caucasian	45
Hispanic/Latino	1
Other	2
Average Tenure Teaching	4.2
Average Tenure at Site	9.5

**4**

ADMINISTRATORS

African American	0
Asian	1
Caucasian	3
Hispanic/Latino	0
Other	0
Years at Site	5.25

**23**

OTHER SUPPORT STAFF

African American	3
Asian	8
Caucasian	8
Hispanic/Latino	4
Other	0
Average Tenure at Site	3.86

## BULLIS CHARTER SCHOOL

102 W. Portola Ave. • Los Altos, CA 94022 • Phone: 650-947-4100 • E-mail: cbripton@bullisarterschool.com



# DISCOVERY CHARTER SCHOOL I

PRINCIPAL: DEBBY PERRY • CMO: DISCOVERY CHARTER SCHOOL



Academic Year 2016-2017 • Current Grade Span: K-8

## Fast Facts

District Appeal or Countywide:	District Appeal (MSD)
Authorization Date by SCCBOE:	2006
Opened:	2006
Renewal(s):	2009, 2014
Current Charter Term:	2014-2019

## Financial Data

Average Teacher Salary	\$74,521
Average Classified Staff Salary	\$46,330
Average Per Pupil Cost	\$10,352
CMO Fee	\$371,041
Facility Cost	\$326,330
Facility - Leased/Owned	Leased
Offers Retirement Benefits	Yes
Participates in STRS	Yes
Participates in PERS	No
Other Retirement Benefits	403B Vanguard
Annual Teacher Attrition Rate	6.25%
Teachers Not Returning/Total Teachers	2/32

Data Reported by School, Spring 2017

**552**  
Students Enrolled

## Number of:

Students on Wait List	412
EL Students	21 3.8%
Students with IEPs	60 10.9%
FRL Students	26 4.7%
Students from Local District	320
Annual Attrition Rate (Students)	4%
(number of students who could return but did not/number of students who could have returned)	



**32**

TEACHERS

African American	0
Asian	4
Caucasian	25
Hispanic/Latino	3
Other	0
Average Tenure Teaching	10.5
Average Tenure at Site	8

**1**

ADMINISTRATORS

African American	0
Asian	0
Caucasian	1
Hispanic/Latino	0
Other	0
Years at Site	10.5

**3**

OTHER SUPPORT STAFF

African American	0
Asian	1
Caucasian	2
Hispanic/Latino	0
Other	0
Average Tenure at Site	N/A

## DISCOVERY CHARTER SCHOOL I

4021 Teale Ave. • San José, CA 95117 • Phone: 408-243-9800 • E-mail: dperry@discoveryk8.org



# DISCOVERY CHARTER SCHOOL II

PRINCIPAL: MIKI WALKER • CMO: DISCOVERY CHARTER SCHOOL

Academic Year 2016-2017 • Current Grade Span: TK-8

## Fast Facts

District Appeal or Countywide:	District Appeal (SJUSD)
Authorization Date by SCCBOE:	2013
Opened:	2013
Renewal(s):	
Current Charter Term:	2013-2018

## Financial Data

Average Teacher Salary	\$65,897
Average Classified Staff Salary	\$46,052
Average Per Pupil Cost	\$9,440
CMO Fee	\$247,360
Facility Cost	\$978,000
Facility - Leased/Owned	Leased
Offers Retirement Benefits	Yes
Participates in STRS	Yes
Participates in PERS	No
Other Retirement Benefits	403B Vanguard
Annual Teacher Attrition Rate	14.80%
Teachers Not Returning/Total Teachers	4/27

Data Reported by School, Spring 2017



**523**  
Students Enrolled

## Number of:

Students on Wait List	0
EL Students	24 4.6%
Students with IEPs	82 15.7%
FRL Students	18 3.4%
Students from Local District	274

Annual Attrition Rate (Students) 5%  
(number of students who could return but did not/number of students who could have returned)

**27**

TEACHERS

African American	1
Asian	4
Caucasian	21
Hispanic/Latino	1
Other	0
Average Tenure Teaching	6
Average Tenure at Site	2

**1**

ADMINISTRATORS

African American	0
Asian	1
Caucasian	0
Hispanic/Latino	0
Other	0
Years at Site	3

**3**

OTHER SUPPORT STAFF

African American	0
Asian	0
Caucasian	3
Hispanic/Latino	0
Other	0
Average Tenure at Site	N/A

## DISCOVERY CHARTER SCHOOL II

762 Sunset Glen • San José, CA 95123 • Phone: 408-300-1358 • E-mail: mwalker@discoverytwo.org

# DOWNTOWN COLLEGE PREP (DCP): ALUM ROCK

CO-PRINCIPALS: LETYVILLA (6-8), TERRI FURTON (9-12) • CMO: DOWNTOWN COLLEGE PREP



Academic Year 2016-2017 • Current Grade Span: 6-12

## Fast Facts

District Appeal or Countywide:	District Appeal (ARUSD)
Authorization Date by SCCBOE:	2009
Opened:	2011
Renewal(s):	2016
Current Charter Term:	2016-2021

## Financial Data

Average Teacher Salary	\$62,864
Average Classified Staff Salary	\$40,136
Average Per Pupil Cost	\$10,753
Facility Cost	\$738,900
Facility - Leased/Owned	Leased
Offers Retirement Benefits	Yes
Participates in STRS	Yes
Participates in PERS	Yes
Annual Teacher Attrition Rate	15.60%

Data Reported by School, Spring 2017

**639**  
Students Enrolled

## Number of:

Students on Wait List	0
EL Students	28%
Students with IEPs	9%
FRL Students	80%
Students from Local District	84%

Annual Attrition Rate (Students) 15%  
(number of students who could return but did not/number of students who could have returned)



**32**

TEACHERS

African American	2
Asian	4
Caucasian	12
Hispanic/Latino	13
Other	1
Average Tenure Teaching	4.2
Average Tenure at Site	2.5

**4**

ADMINISTRATORS

African American	0
Asian	0
Caucasian	2
Hispanic/Latino	2
Other	0
Years at Site	

**12**

OTHER SUPPORT STAFF

African American	0
Asian	0
Caucasian	0
Hispanic/Latino	10
Other	2
Average Tenure at Site	2

## DOWNTOWN COLLEGE PREP (DCP): ALUM ROCK

High School Campus • 1776 Educational Park Dr., Bldg. H • San José, CA 95148 • Phone: 408-384-4554 • Email: tfurton@dcp.org  
Middle School Campus • 2800 Ocala Rd. • San José, CA 95148 • Phone: 408-942-7000 • E-mail: lvilla@dcp.org



# OPPORTUNITY YOUTH ACADEMY (OYA)

PRINCIPAL: NICKY RAMOS-BEBAN, PH.D. • CMO: SCCOE DEPENDENT CHARTER

Academic Year 2016-2017 • Current Age Span: 9-12

## Fast Facts

District Appeal or Countywide:	Countrywide
Authorization Date by SCCBOE:	2016
Opened:	2016
Renewal(s):	N/A
Current Charter Term:	2016-2021

## Financial Data

Average Teacher Salary	\$100,000
Average Classified Staff Salary	\$45,000
Average Per Pupil Cost	\$14,000
CMO Rate	Varies
CMO Fee	Accting & Charter Srvc
Facility Cost	\$19,500
Facility - Leased/Owned	Leasing
Offers Retirement Benefits	Yes
Participates in STRS	Yes
Participates in PERS	Yes
Other Retirement Benefits	Yes
Annual Teacher Attrition Rate	

Data Reported by School, Spring 2017



**201**  
Students Enrolled

## Number of:

Students on Wait List	0
EL Students	59 / 29%
Students with IEPs	52 / 25%
FRL Students	140 / 69%
Students from Local District	201
Annual Attrition Rate (Students)	205
(number of students who could return but did not/number of students who could have returned)	

**10**

TEACHERS

African American	1
Asian	1
Caucasian	5
Hispanic/Latino	2
Other	1
Average Tenure Teaching	6
Average Tenure at Site	6

**1**

ADMINISTRATORS

African American	0
Asian	0
Caucasian	0
Hispanic/Latino	1
Other	0
Years at Site	2

**9**

OTHER SUPPORT STAFF

African American	0
Asian	2
Caucasian	0
Hispanic/Latino	6
Other	1
Average Tenure at Site	0

## OPPORTUNITY YOUTH ACADEMY (OYA)

591 North King Rd., STE 1 • San José, CA 95133 • Phone: 408-453-4280 • E-mail: Nicky\_Ramos-Beban@sccoe.org



# ROCKETSHIP ALMA ACADEMY

PRINCIPAL: SAMANTHA TURNER • CMO: ROCKETSHIP EDUCATION



Academic Year 2016-2017 • Current Grade Span: K-5

## Fast Facts

District Appeal or Countywide:	Countywide
Authorization Date by SCCBOE:	2011
Opened:	2012
Renewal(s):	2017
Current Charter Term:	2017-2022

## Financial Data

Average Teacher Salary	\$58,209
Average Classified Staff Salary	\$33,591
Average Per Pupil Cost	\$10,926
CMO Rate	15%
CMO Fee	\$772,954
Facility Cost	\$715,586**
Facility - Leased/Owned	Owned**
Offers Retirement Benefits	Yes
Participates in STRS	Yes
Participates in PERS	No
Other Retirement Benefits	403(b)
Annual Teacher Attrition Rate	35%

Data Reported by School, Spring 2017

\*\*Information Provided by Rocketship

**526**  
Students Enrolled

## Number of:

Students on Wait List	42
EL Students	48%
Students with IEPs	6.46%
FRL Students	90.31%
Students from Local District	235

Annual Attrition Rate (Students) 21%  
(number of students who could return but did not/number of students who could have returned)



**19**

TEACHERS

African American	3
Asian	2
Caucasian	8
Hispanic/Latino	5
Other	1
Average Tenure Teaching	3 Years
Average Tenure at Site	1 Year

**3**

ADMINISTRATORS

African American	0
Asian	2
Caucasian	1
Hispanic/Latino	0
Other	0
Years at Site	

**19**

OTHER SUPPORT STAFF

African American	2
Asian	2
Caucasian	3
Hispanic/Latino	12
Other	0
Average Tenure at Site	

## ROCKETSHIP ALMA ACADEMY

198 W. Alma Ave. • San José, CA 95110 • Phone: 408-931-6838 • E-mail: sturner@rsed.org

23

Charter Schools Data Book 2017  
Santa Clara County Office of Education



# ROCKETSHIP BRILLIANT MINDS

PRINCIPAL: CHIOMA ELLIS • CMO: ROCKETSHIP EDUCATION

Academic Year 2016-2017 • Current Grade Span: TK-5

## Fast Facts

District Appeal or Countywide:	Countywide
Authorization Date by SCCBOE:	2011
Opened:	2012
Renewal(s):	2017
Current Charter Term:	2017-2022

## Financial Data

Average Teacher Salary	\$57,370
Average Classified Staff Salary	\$37,952
Average Per Pupil Cost	\$11,312
CMO Rate	15%
CMO Fee	\$980,083
Facility Cost	\$1,103,936**
Facility - Leased/Owned	Owned**
Offers Retirement Benefits	Yes
Participates in STRS	Yes
Participates in PERS	No
Other Retirement Benefits	403(b)
Annual Teacher Attrition Rate	45%

Data Reported by School, Spring 2017

\*\*Information Provided by Rocketship



# 604

Students Enrolled

## Number of:

Students on Wait List	74
EL Students	56.12%
Students with IEPs	8.61%
FRL Students	81.46%
Students from Local District	366

Annual Attrition Rate (Students) 16%  
(number of students who could return but did not/number of students who could have returned)

# 21

TEACHERS

African American	4
Asian	5
Caucasian	8
Hispanic/Latino	4
Other	0
Average Tenure Teaching	4 Years
Average Tenure at Site	2 Years

# 3

ADMINISTRATORS

African American	2
Asian	0
Caucasian	1
Hispanic/Latino	0
Other	0
Years at Site	

# 25

OTHER SUPPORT STAFF

African American	4
Asian	5
Caucasian	2
Hispanic/Latino	14
Other	0
Average Tenure at Site	

## ROCKETSHIP BRILLIANT MINDS

2962 Story Rd. • San José, CA 95127 • Phone: 408-708-5650 • E-mail: cellis@rsed.org

# ROCKETSHIP DISCOVERY PREP

PRINCIPAL: EESIR KAUR • CMO: ROCKETSHIP EDUCATION



Academic Year 2016-2017 • Current Grade Span: TK-5

## Fast Facts

District Appeal or Countywide:	Countywide
Authorization Date by SCCBOE:	2011
Opened:	2011
Renewal(s):	2016
Current Charter Term:	2016-2021

## Financial Data

Average Teacher Salary	\$56,555
Average Classified Staff Salary	\$41,317
Average Per Pupil Cost	\$12,014
CMO Rate	15%
CMO Fee	\$712,623
Facility Cost	\$935,657**
Facility - Leased/Owned	Owned**
Offers Retirement Benefits	Yes
Participates in STRS	Yes
Participates in PERS	No
Other Retirement Benefits	403(b)
Annual Teacher Attrition Rate	26%

Data Reported by School, Spring 2017

\*\*Information Provided by Rocketship

# 464

Students Enrolled

## Number of:

Students on Wait List	34
EL Students	58.19%
Students with IEPs	9.27%
FRL Students	85.56%
Students from Local District	220

Annual Attrition Rate (Students) 24%  
(number of students who could return but did not/number of students who could have returned)



# 19

TEACHERS

African American	1
Asian	3
Caucasian	6
Hispanic/Latino	9
Other	0
Average Tenure Teaching	3 Years
Average Tenure at Site	2 Years

# 3

ADMINISTRATORS

African American	1
Asian	1
Caucasian	1
Hispanic/Latino	0
Other	0
Years at Site	

# 21

OTHER SUPPORT STAFF

African American	4
Asian	1
Caucasian	1
Hispanic/Latino	15
Other	0
Average Tenure at Site	

## ROCKETSHIP DISCOVERY PREP

370 Wooster Ave. • San José, CA 95116 • Phone: 408-217-8951 • E-mail: ekaur@rsed.org

25

Charter Schools Data Book 2017  
Santa Clara County Office of Education



# ROCKETSHIP FUERZA

PRINCIPAL: JUAN MATEOS • CMO: ROCKETSHIP EDUCATION

Academic Year 2016-2017 • Current Grade Span: TK-5

## Fast Facts

District Appeal or Countywide:	District Appeal (ARUSD)
Authorization Date by SCCBOE:	2014
Opened:	2014
Renewal(s):	N/A
Current Charter Term:	2014-2019

## Financial Data

Average Teacher Salary	\$57,975
Average Classified Staff Salary	\$38,880
Average Per Pupil Cost	\$11,365
CMO Rate	15%
CMO Fee	\$1,049,073
Facility Cost	\$1,408,960**
Facility - Leased/Owned	Owned**
Offers Retirement Benefits	Yes
Participates in STRS	Yes
Participates in PERS	No
Other Retirement Benefits	403(b)
Annual Teacher Attrition Rate	28%

Data Reported by School, Spring 2017

\*\*Information Provided by Rocketship



# 612

Students Enrolled

## Number of:

Students on Wait List	207
EL Students	51.50%
Students with IEPs	6.40%
FRL Students	78.56%
Students from Local District	414

Annual Attrition Rate (Students) 13%  
(number of students who could return but did not/number of students who could have returned)

# 20

TEACHERS

African American	4
Asian	3
Caucasian	4
Hispanic/Latino	9
Other	0
Average Tenure Teaching	3 Years
Average Tenure at Site	2 Years

# 3

ADMINISTRATORS

African American	0
Asian	2
Caucasian	1
Hispanic/Latino	0
Other	0
Years at Site	

# 20

OTHER SUPPORT STAFF

African American	1
Asian	0
Caucasian	0
Hispanic/Latino	19
Other	1
Average Tenure at Site	

## ROCKETSHIP FUERZA

70 S. Jackson Ave. • San José, CA 95116 • Phone: 408-708-5744 • E-mail: [jmateos@rsed.org](mailto:jmateos@rsed.org)



# ROCKETSHIP LOS SUEÑOS

PRINCIPAL: JUDY LAVI • CMO: ROCKETSHIP EDUCATION



Academic Year 2016-2017 • Current Grade Span: K-5

## Fast Facts

District Appeal or Countywide:	Countywide
Authorization Date by SCCBOE:	2009
Opened:	2010
Renewal(s):	2015
Current Charter Term:	2015-2020

## Financial Data

Average Teacher Salary	\$63,409
Average Classified Staff Salary	\$37,250
Average Per Pupil Cost	\$12,493
CMO Rate	15%
CMO Fee	\$807,262
Facility Cost	\$1,141,754**
Facility - Leased/Owned	Owned**
Offers Retirement Benefits	Yes
Participates in STRS	Yes
Participates in PERS	No
Other Retirement Benefits	403(b)
Annual Teacher Attrition Rate	30%

Data Reported by School, Spring 2017

\*\*Information Provided by Rocketship

# 483

Students Enrolled

## Number of:

Students on Wait List	6
EL Students	50.31%
Students with IEPs	7.03%
FRL Students	87.14%
Students from Local District	279

Annual Attrition Rate (Students) 35%  
(number of students who could return but did not/number of students who could have returned)



# 19

TEACHERS

African American	2
Asian	5
Caucasian	9
Hispanic/Latino	3
Other	0
Average Tenure Teaching	4 Years
Average Tenure at Site	2 Years

# 3

ADMINISTRATORS

African American	1
Asian	0
Caucasian	2
Hispanic/Latino	0
Other	0
Years at Site	1.5

# 21

OTHER SUPPORT STAFF

African American	0
Asian	3
Caucasian	1
Hispanic/Latino	16
Other	0
Average Tenure at Site	

## ROCKETSHIP LOS SUEÑOS

331 South 34th St. • San José, CA 95116 • Phone: 408-684-4028 • E-mail: jlavi@rsed.org

27

Charter Schools Data Book 2017  
Santa Clara County Office of Education



# ROCKETSHIP MATEO SHEEDY

PRINCIPAL: JASON FROMOLTZ • CMO: ROCKETSHIP EDUCATION

Academic Year 2016-2017 • Current Grade Span: K-5

## Fast Facts

District Appeal or Countywide:	District Appeal (SJUSD)
Authorization Date by SCCBOE:	2006
Opened:	2007
Renewal(s):	2009, 2015
Current Charter Term:	2015-2020

## Financial Data

Average Teacher Salary	\$59,460
Average Classified Staff Salary	\$36,730
Average Per Pupil Cost	\$11,312
CMO Rate	15%
CMO Fee	\$876,974
Facility Cost	\$868,389**
Facility - Leased/Owned	Owned**
Offers Retirement Benefits	Yes
Participates in STRS	Yes
Participates in PERS	No
Other Retirement Benefits	403(b)
Annual Teacher Attrition Rate	41%

Data Reported by School, Spring 2017

\*\*Information Provided by Rocketship



# 585

Students Enrolled

## Number of:

Students on Wait List	8
EL Students	49.40%
Students with IEPs	6.30%
FRL Students	87.52%
Students from Local District	380

Annual Attrition Rate (Students) 16%  
(number of students who could return but did not/number of students who could have returned)

# 19

TEACHERS

African American	3
Asian	2
Caucasian	8
Hispanic/Latino	5
Other	1
Average Tenure Teaching	4 Years
Average Tenure at Site	2 Years

# 4

ADMINISTRATORS

African American	1
Asian	1
Caucasian	2
Hispanic/Latino	0
Other	0
Years at Site	

# 26

OTHER SUPPORT STAFF

African American	1
Asian	4
Caucasian	1
Hispanic/Latino	18
Other	2
Average Tenure at Site	

## ROCKETSHIP MATEO SHEEDY

788 Locust St. • San José, CA 95110 • Phone: 408-286-3330 • E-mail: jfromoltz@rsed.org

28

# ROCKETSHIP RISING STARS

PRINCIPAL: KYLIE ALSOFROM • CMO: ROCKETSHIP EDUCATION



Academic Year 2016-2017 • Current Grade Span: TK-4

## Fast Facts

District Appeal or Countywide:	District Appeal (SJUSD)
Authorization Date by SCCBOE:	2015
Opened:	2016
Renewal(s):	N/A
Current Charter Term:	2016-2021
(Opened, Fall 2016)	

## Financial Data

Average Classified Staff Salary	\$42,530
Average Per Pupil Cost	\$13,099

Data Reported by School, Spring 2017

# 499

Students Enrolled

## Number of:

Students on Wait List	8
EL Students	59%
Students with IEPs	3.80%
FRL Students	74.69%
Students from Local District	275

Annual Attrition Rate (Students) Opened in SY16-17  
(number of students who could return but did not/number of students who could have returned)



# 20

TEACHERS

African American	0
Asian	1
Caucasian	11
Hispanic/Latino	8
Other	0
Average Tenure Teaching	N/A
Average Tenure at Site	1.5 Years

# 3

ADMINISTRATORS

African American	1
Asian	1
Caucasian	1
Hispanic/Latino	0
Other	0
Years at Site	

# 9

OTHER SUPPORT STAFF

African American	0
Asian	0
Caucasian	0
Hispanic/Latino	9
Other	0
Average Tenure at Site	

## ROCKETSHIP RISING STARS

3172 Senter Road • San José, CA 95111 • Phone: 408-677-4879 • E-mail: kalsofrom@rsed.org

29



# ROCKETSHIP SÍ SE PUEDE

PRINCIPAL: HEIDY SHINN • CMO: ROCKETSHIP EDUCATION

Academic Year 2016-2017 • Current Grade Span: K-5

## Fast Facts

District Appeal or Countywide:	District Appeal (ARUSD)
Authorization Date by SCCBOE:	2008
Opened:	2009
Renewal(s):	2011, 2017
Current Charter Term:	2017-2022

## Financial Data

Average Teacher Salary	\$61,615
Average Classified Staff Salary	\$31,905
Average Per Pupil Cost	\$11,865
CMO Rate	15%
CMO Fee	\$840,195
Facility Cost	\$1,032,226**
Facility - Leased/Owned	Owned**
Offers Retirement Benefits	Yes
Participates in STRS	Yes
Participates in PERS	No
Other Retirement Benefits	403(b)
Annual Teacher Attrition Rate	32%

Data Reported by School, Spring 2017

\*\*Information Provided by Rocketship



# 486

Students Enrolled

## Number of:

Students on Wait List	8
EL Students	53.50%
Students with IEPs	8.43%
FRL Students	88.06%
Students from Local District	360

Annual Attrition Rate (Students) 31%  
(number of students who could return but did not/number of students who could have returned)

# 18

TEACHERS

African American	4
Asian	3
Caucasian	6
Hispanic/Latino	5
Other	0
Average Tenure Teaching	3 Years
Average Tenure at Site	3 Years

# 3

ADMINISTRATORS

African American	1
Asian	1
Caucasian	0
Hispanic/Latino	1
Other	0
Years at Site	

# 28

OTHER SUPPORT STAFF

African American	2
Asian	2
Caucasian	2
Hispanic/Latino	22
Other	0
Average Tenure at Site	

## ROCKETSHIP SÍ SE PUEDE

2249 Dobern Ave. • San José, CA 95116 • Phone: 408-824-5180 • E-mail: hshinn@rsed.org

30

Charter Schools Data Book 2017  
Santa Clara County Office of Education



# SPARK CHARTER SCHOOL

CHRISTOPHER MAHONEY • CMO: NONE



Academic Year 2016-2017 • Current Grade Span: K-7

## Fast Facts

District Appeal or Countywide:	District Appeal (SESD)
Authorization Date by SCCBOE:	2014
Opened:	2015
Renewal(s):	N/A
Current Charter Term:	2015-2018

## Financial Data

Average Teacher Salary	\$62,000
Average Classified Staff Salary	\$37,525
Average Per Pupil Cost	\$8,462
Facility Cost	\$76,299
Facility - Leased/Owned	Leased
Offers Retirement Benefits	Yes
Participates in STRS	Yes
Participates in PERS	No
Other Retirement Benefits	403B
Annual Teacher Attrition Rate	60%

Data Reported by School, Spring 2017

184

## Number of:

Students on Wait List	0
EL Students	39, 21.19%
Students with IEPs	13, 7.07%
FRL Students	14, 7.60%
Students from Local District	146

Annual Attrition Rate (Students) 12%  
(number of students who could return but did not/number of students who could have returned)



Students Enrolled

10

TEACHERS

African American	0
Asian	3
Caucasian	7
Hispanic/Latino	0
Other	0
Average Tenure Teaching	4
Average Tenure at Site	1

1

ADMINISTRATORS

African American	0
Asian	0
Caucasian	1
Hispanic/Latino	0
Other	0
Years at Site	2

4

OTHER SUPPORT STAFF

African American	0
Asian	1
Caucasian	2
Hispanic/Latino	1
Other	0
Average Tenure at Site	1

## SPARK CHARTER SCHOOL

739 Morse Ave. • Sunnyvale, CA 94085 • Phone: 408-752-2631 • E-mail: [chris@sparkcharter.org](mailto:chris@sparkcharter.org)

31

Charter Schools Data Book 2017  
Santa Clara County Office of Education



# SUMMIT PUBLIC SCHOOLS: DENALI

PRINCIPAL: KEVIN BOCK • CMO: SUMMIT PUBLIC SCHOOLS

Academic Year 2016-2017 • Current Grade Span: 6-9

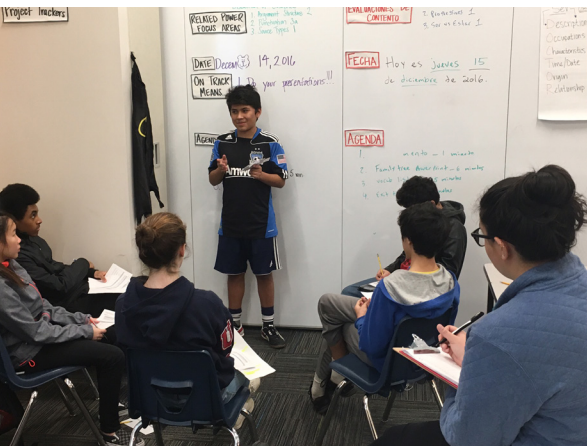
## Fast Facts

District Appeal or Countywide:	Countywide
Authorization Date by SCCBOE:	2012
Opened:	2013
Renewal(s):	N/A
Current Charter Term:	2013-2018

## Financial Data

Average Teacher Salary	\$54,151
Average Classified Staff Salary	\$57,246
Average Per Pupil Cost	\$10,166
CMO Rate	16%
CMO Fee	\$483,709
Facility Cost	\$638,004
Facility - Leased/Owned	Leased
Offers Retirement Benefits	Yes
Participates in STRS	Yes
Participates in PERS	No
Other Retirement Benefits	403b for Classified Staff
Annual Teacher Attrition Rate	35%

Data Reported by School, Spring 2017



# 404

Students Enrolled

## Number of:

Students on Wait List	118
EL Students	38; 10%
Students with IEPs	40; 10%
FRL Students	115; 29%
Students from Local District	395 (Santa Clara County)
Annual Attrition Rate (Students)	MS: 13%
	MS to HS: 42%
(number of students who could return but did not/number of students who could have returned)	

# 14

TEACHERS

African American	0
Asian	3
Caucasian	9
Hispanic/Latino	2
Other	0
Average Tenure Teaching	4.1
Average Tenure at Site	1.4

# 2

ADMINISTRATORS

African American	0
Asian	0
Caucasian	2
Hispanic/Latino	0
Other	0
Years at Site	2

# 2

OTHER SUPPORT STAFF

African American	0
Asian	0
Caucasian	1
Hispanic/Latino	1
Other	0
Average Tenure at Site	2.5

## SUMMIT PUBLIC SCHOOLS: DENALI

495 Mercury Dr. • Sunnyvale, CA 94085 • Phone: 669-600-5695 • E-mail: kbock@summitps.org

# SUMMIT PUBLIC SCHOOLS: TAHOMA

PRINCIPAL: NICHOLAS KIM • CMO: SUMMIT PUBLIC SCHOOLS



Academic Year 2016-2017 • Current Grade Span: 9-12

## Fast Facts

District Appeal or Countywide:	District Appeal (ESUHSD)
Authorization Date by SCCBOE:	2010
Opened:	2011
Renewal(s):	2016
Current Charter Term:	2016-2021

## Financial Data

Average Teacher Salary	\$54,560
Average Classified Staff Salary	\$56,859
Average Per Pupil Cost	\$11,005
CMO Rate	16%
CMO Fee	\$411,155
Facility Cost	\$83,950
Facility - Leased/Owned	Leased
Offers Retirement Benefits	Yes
Participates in STRS	Yes
Participates in PERS	No
Other Retirement Benefits	403b for Classified Staff
Annual Teacher Attrition Rate	13

Data Reported by School, Spring 2017

**305**  
Students Enrolled

## Number of:

Students on Wait List	0
EL Students	7.54%
Students with IEPs	15.08%
FRL Students	51.1%
Students from Local District	228
Annual Attrition Rate (Students) (number of students who could return but did not/number of students who could have returned)	10.95%



**14**

**TEACHERS**

African American	0
Asian	2
Caucasian	9
Hispanic/Latino	3
Other	0
Average Tenure Teaching	3.5
Average Tenure at Site	2.36

**2**

**ADMINISTRATORS**

African American	0
Asian	1
Caucasian	1
Hispanic/Latino	0
Other	0
Years at Site	0

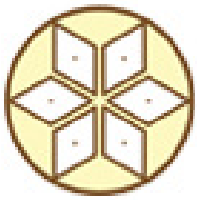
**2**

**OTHER SUPPORT STAFF**

African American	0
Asian	0
Caucasian	0
Hispanic/Latino	2
Other	0
Average Tenure at Site	0

## SUMMIT PUBLIC SCHOOLS: TAHOMA

14271 Story Rd. • San José, CA 95127 • Phone: 408-729-1981 • E-mail: [nkim@summittps.org](mailto:nkim@summittps.org)



# SUNRISE MIDDLE SCHOOL

PRINCIPAL: TERESA ROBINSON • CMO: NONE

Academic Year 2016-2017 • Current Grade Span: 6-8

## Fast Facts

District Appeal or Countywide:	District Appeal (SJUSD)
Authorization Date by SCCBOE:	2014
Opened:	2014
Renewal(s):	N/A
Current Charter Term:	2014-2019

## Financial Data

Average Teacher Salary	\$53,886
Average Classified Staff Salary	\$51,587
Average Per Pupil Cost	\$11,057
Facility Cost	\$120,000
Facility - Leased/Owned	Leased under Prop 39
Offers Retirement Benefits	Yes
Participates in STRS	Yes
Participates in PERS	No
Other Retirement Benefits	403b
Annual Teacher Attrition Rate	11%
Teachers Not Returning/Total Teachers	1/9

Data Reported by School, Spring 2017



# 189

Students Enrolled

## Number of:

Students on Wait List	4
EL Students	77 or 41%
Students with IEPs	26 or 14%
FRL Students	173 or 91%
Students from Local District	142 or 75%

Annual Attrition Rate (Students) 1%  
(number of students who could return but did not/number of students who could have returned)

# 9

TEACHERS

African American	1
Asian	4
Caucasian	4
Hispanic/Latino	0
Other	0
Average Tenure Teaching 5 Years	
Average Tenure at Site	2 Years

# 3

ADMINISTRATORS

African American	0
Asian	1
Caucasian	2
Hispanic/Latino	0
Other	0
Years at Site	6

# 10

OTHER SUPPORT STAFF

African American	0
Asian	0
Caucasian	0
Hispanic/Latino	9
Other	1
Average Tenure at Site	3 Years

## SUNRISE MIDDLE SCHOOL

1149 E. Julian St., Bldg. G. • San José, CA 95116 • Phone: 408-659-4785 • E-mail: [teresa@sunrisemidde.org](mailto:teresa@sunrisemidde.org)



# UNIVERSITY PREP ACADEMY

PRINCIPAL: DANIEL ORDAZ • CMO: NONE



Academic Year 2016-2017 • Current Grade Span: 7-12

## Fast Facts

District Appeal or Countywide:	Countywide
Authorization Date by SCCBOE:	2006
Opened:	2007
Renewal(s):	2010, 2014
Current Charter Term:	2015-2020

## Financial Data

Average Teacher Salary	\$64,328
CMO Rate	\$8,987
Facility - Leased/Owned	\$525,323
Offers Retirement Benefits	Leased
Participates in STRS	Yes
Participates in PERS	No
Other Retirement Benefits	Social Security
Annual Teacher Attrition Rate	13%
Teachers Not Returning/Total Teachers	

Data Reported by School, Spring 2017

**610**  
Students Enrolled

## Number of:

Students on Wait List	610
EL Students	14/2%
Students with IEPs	14/2%
FRL Students	112/18.3%
Students from Local District	610

Annual Attrition Rate (Students) 5%  
(number of students who could return but did not/number of students who could have returned)



**32**

TEACHERS

African American	1
Asian	3
Caucasian	20
Hispanic/Latino	7
Other	1
Average Tenure Teaching	6.2
Average Tenure at Site	5 Years

**4**

ADMINISTRATORS

African American	0
Asian	1
Caucasian	1
Hispanic/Latino	2
Other	0
Years at Site	10

**9**

OTHER SUPPORT STAFF

African American	0
Asian	0
Caucasian	4
Hispanic/Latino	5
Other	0
Average Tenure at Site	4.3 Years

## UNIVERSITY PREP ACADEMY

2315 Canoas Garden Ave. • San José, CA 95125 • Phone: 408-723-1839 • E-mail: dordaz@upatoday.com

Academic Year 2016-2017 • Current Grade Span: TK-2nd

## Fast Facts

District Appeal or Countywide:	District Appeal (MHUSD)
Authorization Date by SCCBOE:	October 2014
Opened:	July 2015
Renewal(s):	N/A
Current Charter Term:	2015-2018

## Financial Data

Average Teacher Salary	\$51,430
Average Classified Staff Salary	\$27,730
Average Per Pupil Cost	\$12,437
CMO Rate	12% of State Funds
Facility Cost	\$138,864
Facility - Leased/Owned	Leased
Offers Retirement Benefits	Yes
Participates in STRS	Yes
Participates in PERS	No
Other Retirement Benefits	401 (k)
Annual Teacher Attrition Rate	12.50%

Data Reported by School, Spring 2017



**136**

Students Enrolled

## Number of:

Students on Wait List	2
EL Students	98 (72%)
Students with IEPs	15 (11%)
FRL Students	96 (71%)
Students from Local District	105

Annual Attrition Rate (Students) 8/91 = 9%  
(number of students who could return but did not/number of students who could have returned)

**6**

TEACHERS

African American	0
Asian	0
Caucasian	1
Hispanic/Latino	5
Other	0
Average Tenure Teaching	1
Average Tenure at Site	1

**1**

ADMINISTRATORS

African American	0
Asian	0
Caucasian	0
Hispanic/Latino	1
Other	0
Years at Site	1

**12**

OTHER SUPPORT STAFF

African American	0
Asian	0
Caucasian	0
Hispanic/Latino	12
Other	0
Average Tenure at Site	1

# VOICES COLLEGE-BOUND LANGUAGE ACADEMY AT MT. PLEASANT

PRINCIPAL: MARIA MADRIGAL • CMO: VOICES COLLEGE-BOUND ACADEMIES



Academic Year 2016-2017 • Current Grade Span: TK-2nd

## Fast Facts

District Appeal or Countywide:	District Appeal (MHUSD)
Authorization Date by SCCBOE:	February 18, 2015
Opened:	July 2015
Renewal(s):	N/A
Current Charter Term:	2015-2020

## Financial Data

Average Teacher Salary	\$51,000
Average Classified Staff Salary	\$29,620
Average Per Pupil Cost	\$12,220
CMO Rate	12% of State Funds
Facility Cost	\$150,000
Facility - Leased/Owned	Leased
Offers Retirement Benefits	Yes
Participates in STRS	Yes
Participates in PERS	No
Other Retirement Benefits	401 (k)
Annual Teacher Attrition Rate	20.00%

Data Reported by School, Spring 2017

**168**  
Students Enrolled

## Number of:

Students on Wait List	2
EL Students	121 (72%)
Students with IEPs	8 (4.8%)
FRL Students	117 (70%)
Students from Local District	24%
Annual Attrition Rate (Students)	22/98 = 22%
(number of students who could return but did not/number of students who could have returned)	



**6**

TEACHERS

African American	0
Asian	1
Caucasian	1
Hispanic/Latino	4
Other	0
Average Tenure Teaching	1.6
Average Tenure at Site	1

**1**

ADMINISTRATORS

African American	0
Asian	0
Caucasian	0
Hispanic/Latino	1
Other	0
Years at Site	1

**18**

OTHER SUPPORT STAFF

African American	0
Asian	0
Caucasian	0
Hispanic/Latino	18
Other	0
Average Tenure at Site	1

## Voices College-Bound Language Academy at Mt. Pleasant

14271 Story Road • San José, CA 95127 • Phone: 408-571-6404 • E-mail: mmadriral@voicescharterschool.com

# SCCOE DISTRICT ENROLLMENT

When reviewing the number of students attending charter schools, almost 3% percent of students in Santa Clara County are enrolled in County Board-authorized charter schools. The growth of charter schools in the county continues to have an impact on local school districts. If total charter school enrollment is taken as a whole, the SCCOE would be the 14th largest district out of the 31 districts in the county.

## Santa Clara County District Enrollment (Sorted by Largest to Smallest 2015-2016)

District Name	2014-2015	2015-2016
San José Unified	32,938	32,454
East Side Union High	26,760	26,684
Cupertino Union	19,079	18,948
Santa Clara Unified	15,298	15,388
Palo Alto Unified	12,527	12,485
Evergreen Elementary	12,857	12,282
Alum Rock Union Elementary	12,386	12,068
Gilroy Unified	11,840	11,852
Franklin-McKinley Elementary	11,193	11,114
Fremont Union High	10,792	10,736
Oak Grove Elementary	10,921	10,632
Milpitas Unified	10,281	10,291
<b>SCCOE Authorized Charter Schools</b>	<b>8,926</b>	<b>9,345</b>
Morgan Hill Unified	9,000	9,135
Campbell Union High	7,453	7,676
Campbell Union	7,642	7,600
Berryessa Union Elementary	7,758	7,452
Sunnyvale	6,787	6,640
Union Elementary	5,533	5,692
Mountain View Whisman	5,065	5,084
Moreland	4,825	4,810
Los Altos Elementary	4,675	4,638
Mountain View-Los Altos Union High	3,881	4,028
Cambrian	3,378	3,358
Los Gatos Union Elementary	3,320	3,335
Los Gatos-Saratoga Joint Union High	3,302	3,311
Mt. Pleasant Elementary	2,502	2,445
Saratoga Union Elementary	2,069	2,000
Orchard Elementary	890	908
Luther Burbank	552	528
Loma Prieta Joint Union Elementary	496	491
Lakeside Joint	93	88
<b>County Total:</b>	<b>276,689</b>	<b>284,191</b>

**Sources:** California Department of Education, available at <http://dq.cde.ca.gov/dataquest/>, and Santa Clara County Office of Education

# PETITION HISTORY

The County Board has authorized more charter schools than any other COE in California. With 20 schools operating in 2014-15, and three more approved during 2015-16, the SCCBOE will have 23 authorized schools open in 2016-17.

Year	Charter Petition Activity	Approved	Denied
2003	<p>Received two petitions on appeal</p> <ul style="list-style-type: none"> <li>• <b>Approved Leadership Public School – San José</b> (denied by East Side Union High School District) – High School (Grades 9-12) – opened July 2004</li> <li>• <b>Approved Bullis Charter School</b> (denied by Los Altos Elementary (K-6) – opened July 2004</li> </ul>	2	0
2004	<p>Received three petitions for countywide charter schools</p> <ul style="list-style-type: none"> <li>• <b>Approved Pathfinder Charter School</b> (Grades 9-12) – Opened July 2005</li> <li>• <b>Denied Ready to Work Independent Study Charter</b></li> <li>• <b>Denied Ready to Work Independent Study Charter</b> (2nd petition)</li> </ul>	1	2
2005	<p>Received two petitions on appeal</p> <ul style="list-style-type: none"> <li>• <b>Approved Leadership Public Schools – Campbell</b> (denied by Campbell Union High School District – High School (Grades 9-12) opened July 2006</li> <li>• <b>Approved Discovery Charter School</b> (denied by Moreland Elementary) – (Grades K-8) opened July 2006</li> </ul>	2	0
2006	<p>Received one petition for a countywide charter school</p> <ul style="list-style-type: none"> <li>• <b>Approved University Preparatory Academy</b> (Grades 7-12) – opened July 2007</li> </ul> <p>Received four petitions on appeal</p> <ul style="list-style-type: none"> <li>• <b>Approved Rocketship One</b> (Mateo Sheedy) (denied by San José Unified) – Elementary (Grades K-6) opened July 2007</li> <li>• <b>Denied RAICES College Preparatory</b> (Grades K-6) (denied by Alum Rock)</li> <li>• <b>Denied South Bay Preparatory Academy</b> (Grades 6-12) (denied by Campbell Union High School District)</li> <li>• <b>Denied Community Elementary Charter School</b> (Grades K-5) (denied by Alum Rock)</li> </ul>	2	3
2007	<p>Received two petitions on appeal</p> <ul style="list-style-type: none"> <li>• <b>Approved ACE Charter School</b> (denied by Alum Rock) – Middle School (Grades 5-8) - opened July 2008</li> <li>• <b>Approved South Bay Preparatory Academy</b> (denied by Campbell Union High School District) (Grades 6-12) - opened July 2009</li> </ul> <p>Charter Schools Closed:</p> <ul style="list-style-type: none"> <li>• Pathfinder Charter School: closed January 2007</li> </ul>	2	0
2008	<p>Received one petition for countywide charter school</p> <ul style="list-style-type: none"> <li>• <b>Approved Magnolia Science Academy- Santa Clara</b> (Grades 6-12); opened fall 2010</li> </ul> <p>Received one petition on appeal</p> <ul style="list-style-type: none"> <li>• <b>Approved Rocketship Two</b> (Sí Se Puede) (denied by Alum Rock) – (Grades K-6) opened 2009</li> </ul> <p>Charter Schools Closed:</p> <ul style="list-style-type: none"> <li>• Leadership Public Schools - Campbell: Closed July 2008</li> </ul>	2	0
2009	<p>Received one petition for countywide charter</p> <ul style="list-style-type: none"> <li>• <b>Approved Rocketship Countywide</b> (Grades K-6); opened first school fall 2010 – five total school approved</li> </ul> <p>Received one petition on appeal</p> <ul style="list-style-type: none"> <li>• <b>Approved Downtown College Prep</b> (Grades 6-12); (denied by East Side Union High School District) opened fall 2011</li> </ul>	2	0
2010	<p>Received two petitions for countywide charter</p> <ul style="list-style-type: none"> <li>• <b>Approved Flex Academy Silicon Valley</b> (Grades 6-12) opened in fall 2011</li> <li>• <b>Approved Communitas</b> (Grades 9-12) opened fall 2012</li> </ul> <p>Closed Charter Schools:</p> <ul style="list-style-type: none"> <li>• South Bay Preparatory Academy – Closed summer 2010</li> </ul>	2	0



# PETITION HISTORY

Year	Charter Petition Activity	Approved	Denied
2011	<p>Received 20 petitions for new charter schools</p> <ul style="list-style-type: none"> <li>• <b>Approved Rocketships 8-28</b> (Grades K-6); scheduled to open fall 2013-to-fall 2016 (20 total)</li> </ul> <p>Received four countywide petitions for sites previously authorized under one countywide charter</p> <ul style="list-style-type: none"> <li>• <b>Approved Rocketships 4-7</b> (Grades K-6) opened fall 2011 and fall 2012 (4 total)</li> </ul> <p>Received two petitions on appeal</p> <ul style="list-style-type: none"> <li>• <b>Approved Summit Tahoma</b> (Grades 9-12) (denied by East Side Union High School District); opened fall 2012</li> <li>• <b>Denied American Indian Charter School</b> (denied by San José Unified)</li> </ul>	25	1
2012	<p>Received two petitions for countywide charter schools</p> <ul style="list-style-type: none"> <li>• <b>Denied Discovery II (K-8)</b></li> <li>• <b>Approved Summit Denali</b> (Grades 6-12; ( located in Fremont High School District); opened fall 2013</li> </ul>	1	1
2013	<p>Received four petitions on appeal</p> <ul style="list-style-type: none"> <li>• <b>Approved Discovery II</b> (Grades K-8) (denied by San José Unified; opened fall 2013</li> <li>• <b>Approved Alpha II</b> (Alpha José Hernandez) (Grades 6-8) (denied by Alum Rock); opened fall 2014</li> <li>• <b>Denied Morgan Hill Prep</b> (Grades K-8) (denied by Morgan Hill Unified)</li> <li>• <b>Withdrawn by Petitioner</b> – Rocketship Morgan Hill (denied by Morgan Hill Unified)</li> </ul> <p>Closed Charter Schools:</p> <ul style="list-style-type: none"> <li>• Communitas – Closed Spring 2013</li> </ul>	2	1
2014	<p>Received five petitions on appeal</p> <ul style="list-style-type: none"> <li>• <b>Approved Sunrise Middle</b> (Grades 6-8) denied for renewal by San José Unified; remained open</li> <li>• <b>Approved Rocketship Fuerza</b> (Grades TK-5) denied by Alum Rock Elementary; opened fall 2014</li> <li>• <b>Approved Spark Charter School</b> (Grades K-8) denied by Sunnyvale Elementary; opened fall 2015</li> <li>• <b>Approved Voices-College Bound Academy at Morgan Hill</b> (Grades TK-8) denied by Morgan Hill Unified; opened fall 2015</li> <li>• <b>Denied Morgan Hill Prep</b> (Grades TK-8) denied by Morgan Hill Unified</li> </ul>	4	1
2015 Jan - June	<p>Received three petitions on appeal</p> <ul style="list-style-type: none"> <li>• <b>Denied Wei Yu International Charter</b> (K-8) denied by Moreland School District (approved by State Board of Education in 2016, scheduled to open Fall 2018)</li> <li>• <b>Approved Voices-College Bound Academy at Mount Pleasant</b> (Grades TK-8) denied by Mount Pleasant Elementary; opened fall 2015</li> <li>• <b>Denied STEM Academy of Silicon Valley</b> (Grades TK-8) denied by Santa Clara Unified</li> </ul>	1	2
July 2015 to June 2016	<p>Received one county-wide petition.</p> <ul style="list-style-type: none"> <li>• <b>Withdrawn by Petitioner - Legacy Academy Charter School</b></li> </ul> <p>Received and approved <b>6 Petitions for Renewal</b></p> <ul style="list-style-type: none"> <li>• (Silicon Valley Flex, Summit Tahoma, Downtown College Prep, ACE Empower Academy, Rocketship Discovery Prep, and Bullis Charter)</li> </ul>	0	0
July 2016 to June 2017	<p>Received 2 county-wide petitions and one SCCOE-dependent petition</p> <ul style="list-style-type: none"> <li>• <b>Approved Legacy Academy Charter School</b> – scheduled to open fall 2018</li> <li>• <b>Approved Opportunity Youth Program (SCCOE-Dependent)</b> – opened Aug 2016</li> <li>• <b>Denied Options for Youth</b></li> </ul> <p>Received and approved <b>4 Petitions for Renewal</b></p> <ul style="list-style-type: none"> <li>• (Alpha José Hernandez, Rocketship Sí Se Puede, Rocketship Brilliant Minds, and Rocketship Alma)</li> </ul> <p>Closed Charter Schools</p> <ul style="list-style-type: none"> <li>• Silicon Valley Flex: Closed July 2016</li> <li>• Leadership Public Schools–San José: Closed July 2016</li> <li>• Magnolia Science Academy–Santa Clara: Closed August 2016</li> </ul>	2	1

**Source:** Santa Clara County Office of Education (2017). Board meeting agendas, minutes and recordings found at <http://www.sccoe.org/countyboard>



# Appendix A. Education Code Selections Regarding Charter Schools

## Legislative Intent

The provisions enabling charter schools in California were established by the “Charter Schools Act of 1992.” The legislative intent is defined in Education Code 47601.

### Education Code 47601

*It is the intent of the Legislature, in enacting this part, to provide opportunities for teachers, parents, pupils, and community members to establish and maintain schools that operate independently from the existing school district structure, as a method to accomplish all of the following:*

- (a) Improve pupil learning.*
- (b) Increase learning opportunities for all pupils, with special emphasis on expanded learning experiences for pupils who are identified as academically low achieving.*
- (c) Encourage the use of different and innovative teaching methods.*
- (d) Create new professional opportunities for teachers, including the opportunity to be responsible for the learning program at the school site.*
- (e) Provide parents and pupils with expanded choices in the types of educational opportunities that are available within the public school system.*
- (f) Hold the schools established under this part accountable for meeting measurable pupil outcomes, and provide the schools with a method to change from rule-based to performance-based accountability systems.*
- (g) Provide vigorous competition within the public school system to stimulate continual improvements in all public schools.*

## Nonsectarian, non-discriminatory, no tuition

Charter schools are free public schools and are required to be nonsectarian and are prohibited from engaging in discriminatory practices as defined by law and cannot charge tuition. These provisions are found in Education Code 47605(d)(1).

### Education Code 47605(d)(1)

*In addition to any other requirement imposed under this part, a charter school shall be nonsectarian in its programs, admission policies, employment practices, and all other operations, shall not charge tuition, and shall not discriminate against any pupil on the basis of the characteristics listed in Section 220.*

## Charter Petition Review and Approval or Denial

The provisions regarding charter petition review and decisions are found in Education Code 47605(b)(1-6). These provisions state the legislative intent that “the establishment of charter schools should be encouraged” and require the finding of one or more factors in order to deny a charter petition. In order to deny a petition, the authorizing board must find one or more of the following facts:

- The charter school presents an unsound educational program for the pupils to be enrolled in the charter school.
- The petitioners are demonstrably unlikely to successfully implement the program set forth in the petition.
- The petition does not contain the number of signatures required.
- The petition does not contain an affirmation of each of the required conditions.
- The petition does not contain reasonably comprehensive descriptions of the required elements.
- The petition does not contain a declaration of whether or not the charter school shall be deemed the exclusive public employer of the employees of the charter school for purposes of Chapter 10.7 (commencing with Section 3540) of Division 4 of Title 1 of Government Code.

## **Education Code 47605(b)(1-6)**

*In reviewing petitions for the establishment of charter schools pursuant to this section, the chartering authority shall be guided by the intent of the Legislature that charter schools are and should become an integral part of the California educational system and that establishment of charter schools should be encouraged. The governing board of the school district shall grant a charter for the operation of a school under this part if it is satisfied that granting the charter is consistent with sound educational practice. The governing board of the school district shall not deny a petition for the establishment of a charter school unless it makes written factual findings, specific to the particular petition, setting forth specific facts to support one or more of the following findings:*

- (1) The charter school presents an unsound educational program for the pupils to be enrolled in the charter school.*
- (2) The petitioners are demonstrably unlikely to successfully implement the program set forth in the petition.*
- (3) The petition does not contain the number of signatures required by subdivision (a).*
- (4) The petition does not contain an affirmation of each of the conditions described in subdivision (d).*
- (5) The petition does not contain reasonably comprehensive descriptions of all of the following:*
- (6) The petition does not contain a declaration of whether or not the charter school shall be deemed the exclusive public employer of the employees of the charter school for purposes of Chapter 10.7 (commencing with Section 3540) of Division 4 of Title 1 of Government Code.*
  - (A) (i) The educational program of the charter school, designed, among other things, to identify those whom the school is attempting to educate, what it means to be an "educated person" in the 21st century, and how learning best occurs. The goals identified in that program shall include the objective of enabling pupils to become self-motivated, competent, and lifelong learners.*
  - (ii) The annual goals for the charter school, for all pupils and for each subgroup of pupils identified pursuant to Section 52052, to be achieved in the state priorities, as described in subdivision (d) of Section 52060, that apply for the grade levels served, or the nature of the program operated, by the charter school, and specific annual actions to achieve those goals. A charter petition may identify additional school priorities, the goals for the school priorities, and the specific annual actions to achieve those goals.*
  - (iii) If the proposed school will serve high school pupils, the manner in which the charter school will inform parents about the transferability of courses to other public high schools and the eligibility of courses to meet college entrance requirements. Courses offered by the charter school that are accredited by the Western Association of Schools and Colleges may be considered transferable and courses approved by the University of California or the California State University as creditable under the "A" to "G" admissions criteria may be considered to meet college entrance requirements. (B) The measurable pupil outcomes identified for use by the charter school. "Pupil outcomes," for purposes of this part, means the extent to which all pupils of the school demonstrate that they have attained the skills, knowledge, and attitudes specified as goals in the school's educational program. Pupil outcomes shall include outcomes that address increases in pupil academic achievement both schoolwide and for all groups of pupils served by the charter school, as that term is defined in subparagraph (B) of paragraph (3) of subdivision (a) of Section 47607. The pupil outcomes shall align with the state priorities, as described in subdivision (d) of Section 52060, that apply for the grade levels served, or the nature of the program operated, by the charter school.*
  - (C) The method by which pupil progress in meeting those pupil outcomes is to be measured. To the extent practicable, the method for measuring pupil outcomes for state priorities shall be consistent with the way information is reported on a school accountability report card.*
  - (D) The governance structure of the school, including, but not limited to, the process to be followed by the school to ensure parental involvement.*
  - (E) The qualifications to be met by individuals to be employed by the charter school.*
  - (F) The procedures that the charter school will follow to ensure the health and safety of pupils and staff. These procedures shall include the requirement that each employee of the school furnish it with a criminal record summary as described in Section 44237.*
  - (G) The means by which the school will achieve a racial and ethnic balance among its pupils that is reflective of the general population residing within the territorial jurisdiction of the school district to which the charter petition is submitted.*
  - (H) Admission requirements, if applicable.*
  - (I) The manner in which annual, independent financial audits shall be conducted, which shall employ generally accepted accounting principles, and the manner in which audit exceptions and deficiencies shall be resolved to the satisfaction of the chartering authority.*

(J) The procedures by which pupils can be suspended or expelled.

(K) The manner by which staff members of the charter schools will be covered by the State Teachers' Retirement System, the Public Employees' Retirement System, or federal social security.

(L) The public school attendance alternatives for pupils residing within the school district who choose not to attend charter schools.

(M) The rights of any employee of the school district upon leaving the employment of the school district to work in a charter school, and of any rights of return to the school district after employment at a charter school.

(N) The procedures to be followed by the charter school and the entity granting the charter to resolve disputes relating to provisions of the charter.

(O) The procedures to be used if the charter school closes. The procedures shall ensure a final audit of the school to determine the disposition of all assets and liabilities of the charter school, including plans for disposing of any net assets and for the maintenance and transfer of pupil records.

## **Charter Petition Denial and Appeal**

Charter petitions that are denied can be appealed. Petitions denied by a local school board can be submitted on appeal to the County Board of Education and petitions denied by the county board of education can be submitted on appeal to the State Board of Education. These provisions are found in Education Code 47605(j)(1).

### **Education Code 47605(j)(1)**

*If the governing board of a school district denies a petition, the petitioner may elect to submit the petition for the establishment of a charter school to the County Board of Education. The County Board of Education shall review the petition pursuant to subdivision (b). If the petitioner elects to submit a petition for establishment of a charter school to the County Board of Education and the County Board of Education denies the petition, the petitioner may file a petition for establishment of a charter school with the state board, and the state board may approve the petition, in accordance with Education Code 47605(b).*

## **Petitions to the County Board of Education**

Charter petitions may be submitted directly to the County Board of Education for charter schools that propose to serve students for whom the county office of education would otherwise be responsible for serving ("county-like") or for a charter school that would offer services that could not be provided by a charter school that operates in only one school district in the county. These provisions are found in Education Code sections 47605.5 and 47605.6

### **Education Code 47605.5**

*A petition may be submitted directly to a county board of education in the same manner as set forth in Section 47605 for charter schools that will serve pupils for whom the county office of education would otherwise be responsible for providing direct education and related services. Any denial of a petition shall be subject to the same process for any other county board of education denial of a charter school petition pursuant to this part.*

### **Education Code 47605.6**

*(a) (1) In addition to the authority provided by Section 47605.5, a county board of education may also approve a petition for the operation of a charter school that operates at one or more sites within the geographic boundaries of the county and that provides instructional services that are not generally provided by a county office of education. A county board of education may approve a countywide charter only if it finds, in addition to the other requirements of this section, that the educational services to be provided by the charter school will offer services to a pupil population that will benefit from those services and that cannot be served as well by a charter school that operates in only one school district in the county. A petition for the establishment of a countywide charter school pursuant to this subdivision may be circulated throughout the county by any one or more persons seeking to establish the charter school. The petition may be submitted to the county board of education for review after either of the following conditions is met per Education Code 47605.6 (A)(B)(4).*

## **Charter Renewal**

The terms of a charter and charter renewal are covered in Education Code 47607. A charter may be initially granted for a period of up to five years, and may be renewed at the end of that term. Each renewal shall be for a period of five years. The California legislature has identified specific academic criteria that must be satisfied in order for a charter to be reviewed. These criteria are found in Education Code 47607(b).

### **Education Code 47607**

*(b) Commencing on January 1, 2005, or after a charter school has been in operation for four years, whichever date occurs later, a charter school shall meet at least one of the following criteria before receiving a charter renewal pursuant to paragraph (1) of subdivision (a):*

*(1) Attained its Academic Performance Index (API) growth target in the prior year or in two of the last three years both schoolwide and for all groups of pupils served by the charter school.*

*(2) Ranked in deciles 4 to 10, inclusive, on the API in the prior year or in two of the last three years.*

*(3) Ranked in deciles 4 to 10, inclusive, on the API for a demographically comparable school in the prior year or in two of the last three years.*

*(4) (A) The entity that granted the charter determines that the academic performance of the charter school is at least equal to the academic performance of the public schools that the charter school pupils would otherwise have been required to attend, as well as the academic performance of the schools in the school district in which the charter school is located, taking into account the composition of the pupil population that is served at the charter school.*

*(B) The determination made pursuant to this paragraph shall be based upon all of the following:*

*(i) Documented and clear and convincing data.*

*(ii) Pupil achievement data from assessments, including, but not limited to, the Standardized Testing and Reporting Program established by Article 4 (commencing with Section 60640) of Chapter 5 of Part 33 for demographically similar pupil populations in the comparison schools.*

*(iii) Information submitted by the charter school.*

# 2016-17 SCCOE CHARTER SCHOOL DIRECTORY

## **ACE EMPOWER ACADEMY**

625 South Sunset Avenue  
San José, CA 95116  
Phone: 408-729-3920  
Vu Long Trinh, Principal  
[www.acecharter.org](http://www.acecharter.org)

## **ALPHA PUBLIC SCHOOLS: JOSÉ HERNÁNDEZ MIDDLE SCHOOL**

1601 Cunningham Avenue  
San José, CA 95122  
Phone: 408-780-1550  
Samantha Hanlon, Principal  
[www.alphapublicschools.org](http://www.alphapublicschools.org)

## **BULLIS CHARTER SCHOOL**

102 West Portola Avenue  
Los Altos, CA 94022  
Phone: 650-947-4100  
Cynthia Bricton, Principal  
Wanny Hersey, Superintendent  
[www.bullischarterschool.com](http://www.bullischarterschool.com)

## **DISCOVERY CHARTER SCHOOL I**

4021 Teale Avenue  
San José, CA 95117  
Phone: 408-243-9800  
Debby Perry, Principal  
[www.discoveryk8.org](http://www.discoveryk8.org)

## **DISCOVERY CHARTER SCHOOL II**

762 Sunset Glen Drive  
San José, CA 95123  
Phone: 408-300-1358  
Miki Walker, Principal  
Dale Jones, Executive Director  
[www.discoveryk8.org](http://www.discoveryk8.org)

## **DOWNTOWN COLLEGE PREP (DCP) - ALUM ROCK**

9-12 Building - Terri Furton, Principal  
1776 Educational Park Dr., Bldg. H (9-12 building)  
San José, CA 95122  
Phone: 408-384-4554

6-8 Building - Leticia Villa-Gascon, Principal  
2800 Ocala Road  
San José, CA 95148  
Phone: 408-942-7000  
[www.dcp.org](http://www.dcp.org)

## **OPPORTUNITY YOUTH ACADEMY (OYA)**

OYA Sobrato  
512 Valley Way  
Milpitas, CA 95035

OYA South County  
7680 Monterey Rd. STE 101  
Gilroy, CA 95020

OYA The Hub  
591 North King Rd., STE 1  
San José, CA 95133

OYA Washington  
921 S. First Street, STE B  
San José, CA 95110

SCHOOL LEAD: Nicky Ramos-Beban, Ph.D.  
<http://www.sccoe.org/depts/students/oya>

## **ROCKETSHIP ALMA ACADEMY**

198 West Alma Ave.  
San José, CA 95110  
Phone: 408-931-6838  
Samantha Turner, Principal  
[www.rsed.org/alma](http://www.rsed.org/alma)

## **ROCKETSHIP BRILLIANT MINDS**

2962 Story Road  
San José, CA 95127  
Phone: 408-708-5650  
Chioma Ellis, Principal  
[www.rsed.org/brilliantminds](http://www.rsed.org/brilliantminds)

# 2016-17 SCCOE CHARTER SCHOOL DIRECTORY

## **ROCKETSHIP DISCOVERY PREP**

370 Wooster Avenue  
San José, CA 95116  
Phone: 408-217-8951  
Eesir Kaur, Principal  
[www.rsed.org/discoveryprep](http://www.rsed.org/discoveryprep)

## **ROCKETSHIP FUERZA**

70 South Jackson Avenue  
San José, CA 95116  
Phone: 408-708-5744  
Juan Mateos, Principal  
[www.rsed.org/fuerza](http://www.rsed.org/fuerza)

## **ROCKETSHIP LOS SUEÑOS**

331 South 34th Street  
San José, CA 95116  
Phone: 408-684-4028  
Judy Lavi, Principal  
[www.rsed.org/lossuenos](http://www.rsed.org/lossuenos)

## **ROCKETSHIP MATEO SHEEDY**

788 Locust Street  
San José, CA 95110  
Phone: 408-286-3330  
Jason Fromoltz, Principal  
[www.rsed.org/mateosheedy](http://www.rsed.org/mateosheedy)

## **ROCKETSHIP RISING STARS**

3172 Senter Road  
San José, CA 95111  
Kylie Alsofrom, Principal  
[www.rsed.org/risingstars](http://www.rsed.org/risingstars)

## **ROCKETSHIP SÍ SE PUEDE**

2249 Dobern Avenue  
San José, CA 95116  
Phone: 408-824-5180  
Heidi Shinn, Principal  
[www.rsed.org/sisepuede](http://www.rsed.org/sisepuede)

## **SPARK CHARTER SCHOOL**

739 Morse Avenue  
Sunnyvale, CA 94088  
Phone: 408 725-2631  
Chris Mahoney, Head of School  
[www.sparkcharter.org](http://www.sparkcharter.org)

## **SUMMIT PUBLIC SCHOOLS: DENALI**

495 Mercury Drive  
Sunnyvale, CA 94085  
Phone: 669-600-5695  
Kevin Bock, Principal  
[www.summitps.org](http://www.summitps.org)

## **SUMMIT PUBLIC SCHOOLS: TAHOMA**

285 Blossom Hill Road  
San José, CA 95123  
Phone: 408-729-1981  
Nicholas Kim, Principal  
<http://tahoma.summitps.org>

## **SUNRISE MIDDLE SCHOOL**

1149 East Julian Street, Bldg. G  
San José, CA 95116  
Phone: 408-659-4785  
Teresa Robinson, Principal  
[www.sunrisemiddle.org](http://www.sunrisemiddle.org)

## **UNIVERSITY PREP ACADEMY**

2315 Canoas Garden Avenue  
San José, CA 95125  
Phone: 408-723-1839  
Daniel Ordaz, Executive Director  
[www.upasv.org](http://www.upasv.org)

## **VOICES COLLEGE BOUND LANGUAGE ART ACADEMY AT MORGAN HILL**

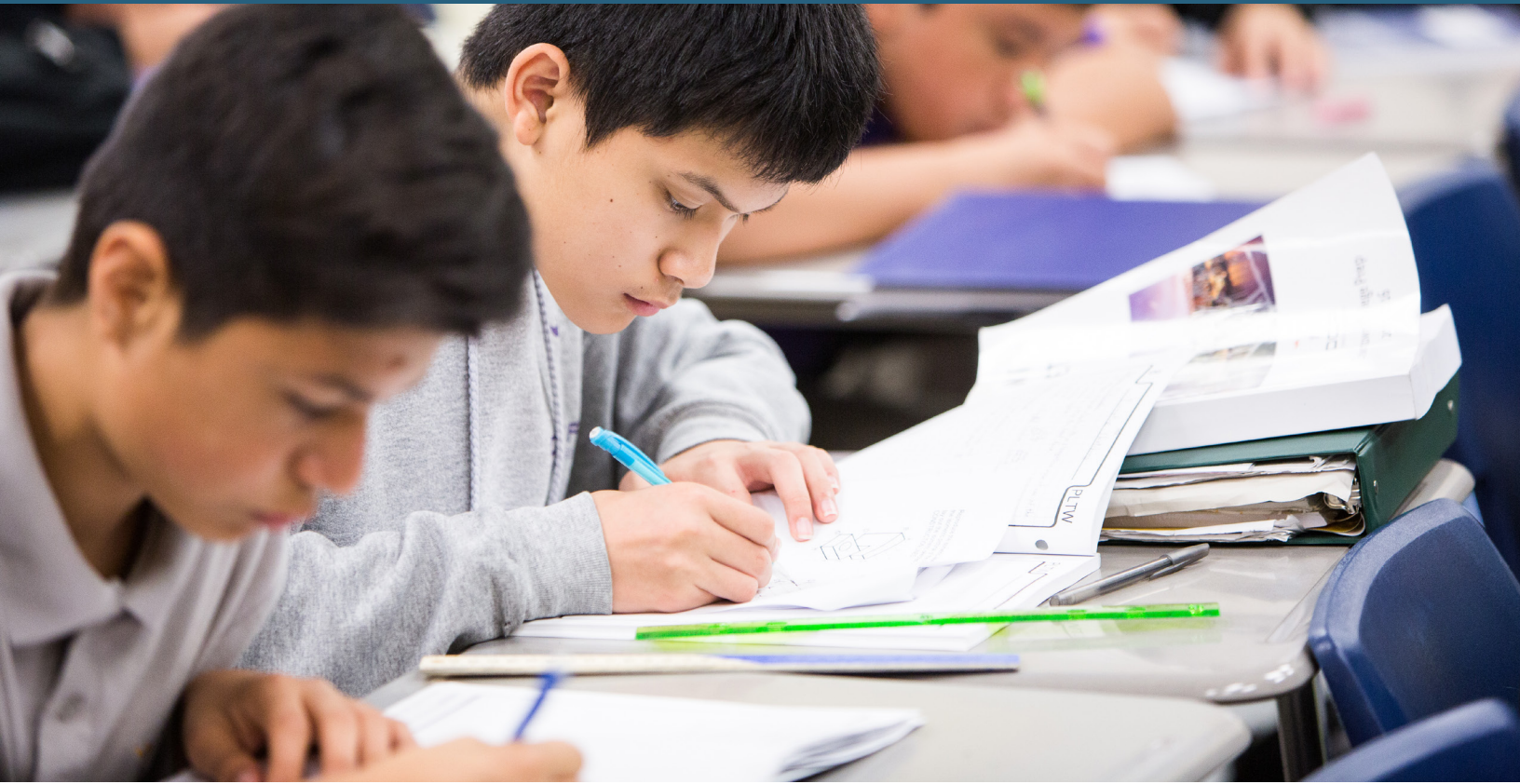
16870 Murphy Avenue  
Morgan Hill, CA 95037  
Phone: 408-791-1700  
Juan Carlos Villasenor, Head of School  
<http://voicesacademies.org>

## **VOICES COLLEGE BOUND LANGUAGE ACADEMY AT MT. PLEASANT**

14271 Story Road  
San José, CA 95127  
Phone: 408-571-6404  
Maria Madrigal, Head of School  
<http://voicesacademies.org>



# ACKNOWLEDGEMENTS



A very special thank you to the following individuals for making this report possible:

## Office of the Superintendent Charter Schools Department

Mary Ann Dewan, Ph.D.  
*Deputy Superintendent*

Kristel Johnson  
*Director, Charter Schools*

Christine Carbone  
Marko Mosunic  
*Financial Administrators, Charter Schools*

Michelle Johnson, Ed.D.  
Vickie Teshin-Anderson  
David Wong  
*Administrator, Charter Schools*

Freddie Lacson  
*Administrative Assistant III, Charter Schools*

# LIST OF ACRONYMS

AB.....	Assembly Bill	CNIPS.....	Child Nutrition Information Payment System
ACA.....	Assembly Concurrent Amendment or Affordable Care Act (also listed as PPACA)	COE.....	County Office of Education
ACSA.....	Association of California School Administrators	COLA.....	Cost-of-Living Adjustment
ADA.....	Average Daily Attendance	COP.....	Certificate of Participation
AFSCME.....	American Federation of State, County, and Municipal Employees	CPI.....	Consumer Price Index
AMO.....	Annual Measurable Objective	CPR.....	California Performance Review
AP.....	Advanced Placement	CSAM.....	California School Accounting Manual
API.....	Academic Performance Index	CSBA.....	California School Boards Association
ARRA.....	American Recovery and Reinvestment Act	CSEA.....	California School Employees Association
ASAM.....	Alternative Schools Accountability Model	CSET.....	California Subject Examination for Teachers
ASES.....	After School Education and Safety Program	CSFG.....	Charter School Facility Grant
AU.....	Administrative Unit of a SELPA	CSIS.....	California School Information Services
AV.....	Assessed Value	CSR.....	Class-Size Reduction or Comprehensive School Reform
AYP.....	Adequate Yearly Progress	CST.....	California Standards Test
BBA.....	Bipartisan Budget Act	CSTP.....	California Standards for the Teaching Profession
BCLAD.....	Bilingual, Crosscultural, Language, and Academic Development	CTA.....	California Teachers Association
BCP.....	Budget Change Proposal	CTC.....	Commission on Teacher Credentialing
BIIG.....	Broadband Infrastructure Improvement Grant	CTE.....	Career Technical Education
BRL.....	Base Revenue Limit	CTO.....	Compensatory Time Off
BTSA.....	Beginning Teacher Support and Assessment	DAC.....	District Advisory Committee
CAASPP.....	California Assessment of Student Performance and Progress	DAIT.....	District Assistance and Intervention Team
CADS.....	Consolidated Application Data System	DGS.....	Department of General Services
CAHSEE.....	California High School Exit Examination	DIS.....	Designated Instruction and Services
CALPADS.....	California Longitudinal Pupil Achievement Data System	DMP.....	Deferred Maintenance Program
CalPERS.....	California Public Employees' Retirement System	DOF.....	Department of Finance
CalSTRS.....	California State Teachers' Retirement System	DSA.....	Division of the State Architect
CALTIDES.....	California Longitudinal Teacher Integrated Data Education System	DSS.....	Department of Social Services
CalWORKs.....	California Work Opportunity and Responsibility to Kids	EAAP.....	Education Audit Appeals Panel
CAPA.....	California Alternate Performance Assessment	EC.....	Education Code
CARS.....	Consolidated Application and Reporting System	EDGAR.....	Education Department General Administrative Regulation
CASSO.....	California Association of School Business Officials	EIA.....	Economic Impact Aid
CASEMIS.....	California Special Education Management Information System	EL.....	English Learner
CASH.....	Coalition for Adequate School Housing	ELA.....	English Language Arts
CBA.....	Collective Bargaining Agreement	ELAC.....	English Language Advisory Committee
CBEDS.....	California Basic Educational Data System	ELAP.....	English Language Acquisition Program
CBEST.....	California Basic Education Skills Test	EPA.....	Education Protection Account
CBIS.....	Course-based Independent Study	ERAF.....	Education Revenue Augmentation Fund
CCC.....	California Community College	ERP.....	Economic Recovery Payment or Emergency Repair Program
CCEE.....	California Collaborative for Educational Excellence	ERT.....	Economic Recovery Target
CCR.....	California Code of Regulations (Title 5) or Coordinated Compliance Review	ESEA.....	Elementary and Secondary Education Act
CCSESA.....	California County Superintendents Educational Services Association	ESL.....	English as a Second Language
CCSS.....	Common Core State Standards	ESSA.....	Every Student Succeeds Act
CDE.....	California Department of Education	ESY.....	Extended School Year
CEA.....	Current Expense of Education Unaudited Actuals	FAPE.....	Free and Appropriate Public Education
CELDT.....	California English Language Development Test	FCMAT.....	Fiscal Crisis & Management Assistance Team
CFR.....	Code of Federal Regulations	FERPA.....	Family Educational Rights and Privacy Act
CFT.....	California Federation of Teachers	FPM.....	Federal Program Monitoring
CLAD.....	Crosscultural, Language, and Academic Development	FRL.....	Free and Reduced Lunch
CMIS.....	Compliance Monitoring, Interventions, and Sanctions	FRPM.....	Free and Reduced-Price Meals
CMO.....	Charter Management Organization	FTE.....	Full-Time Equivalent
		GAAP.....	Generally Accepted Accounting Principles
		GASB.....	Governmental Accounting Standards Board
		GATE.....	Gifted and Talented Education
		GDP.....	Gross Domestic Product
		GSA.....	Grade Span Adjustment
		GO.....	General Obligation (Bond)
		GPA.....	Governor's Performance Award Program

# LIST OF ACRONYMS

HOUSSE.....	High Objective Uniform State Standard of Evaluation	QRIS.....	Quality Rating and Improvement Systems
HQT.....	Highly Qualified Teacher	QSCB.....	Qualified School Construction Bonds
HRA.....	Health Reimbursement Arrangement	QZAB.....	Qualified Zone Academy Bond
HSA.....	Health Savings Account	RDA.....	Redevelopment Agency
IASA.....	Improving America’s Schools Act	REU.....	Reserve for Economic Uncertainties
IDEA.....	Individuals with Disabilities Education Act	RFA.....	Request for Application
IEP.....	Individualized Education Program	ROC/P.....	Regional Occupational Center/Program
IHSS.....	In-Home Support Services	RRMA.....	Routine Restricted Maintenance Account
II/USP.....	Immediate Intervention/Underperforming Schools Program	RSDSS.....	Regional System of District and School Support
IMFRP.....	Instructional Materials Funding Realignment Program	RSP.....	Resource Specialist Program
JLBC.....	Joint Legislative Budget Committee	RTI.....	Response to Intervention
JPA.....	Joint Powers Agreement or Joint Powers Authority	RTTT.....	Race to the Top
LAIF.....	Local Agency Investment Fund	S4.....	Statewide System of School Support
LAO.....	Legislative Analyst’s Office	SCG.....	Supplemental and Concentration Grant
LCAP.....	Local Control and Accountability Plan	SAB.....	State Allocation Board
LCFF.....	Local Control Funding Formula	SACS.....	Standardized Account Code Structure
LCI.....	Licensed Children’s Institution (often used as a generic term to also encompass foster family homes and residential medical facilities)	SAIT.....	School Assistance and Intervention Team
LEA.....	Local Educational Agency	SARB.....	School Attendance Review Board
LEP.....	Limited English Proficient	SARC.....	School Accountability Report Card
LPP.....	Lease Purchase Program	SAT-9.....	Stanford Achievement Test, Ninth Edition, Form T
LRE.....	Least Restrictive Environment	SB.....	Senate Bill
MAA.....	Medi-Cal Administrative Activities	SBAC.....	Smarter Balanced Assessment Consortium
MEP.....	Migrant Education Program	SBE.....	State Board of Education
MOU.....	Memorandum of Understanding	SCA.....	Senate Constitutional Amendment
MSA.....	Minimum State Aid	SCE.....	State Compensatory Education
MTSS.....	Multi-Tiered Systems at Support	SCO.....	State Controller’s Office
MYP.....	Multiyear Projection	SCR.....	Senate Constitutional Resolution
NAEP.....	National Assessment of Educational Progress	SDC.....	Special Day Class
NCES.....	National Center for Education Statistics	SEA.....	State Education Agency
NCLB.....	No Child Left Behind	SED.....	Severely Emotionally Disturbed
NPS/A.....	Nonpublic School/Agency	SEIU.....	Service Employees International Union
NSS.....	Necessary Small School or Necessary Small SELPA	SELPA.....	Special Education Local Plan Area
OAL.....	Office of Administrative Law	SERAF.....	Supplemental Educational Revenue Augmentation Fund
OMB.....	Office of Management and Budget	SES.....	Socioeconomic Status
OPEB.....	Other Postemployment Benefits	SFID.....	School Facility Improvement District
OPSC.....	Office of Public School Construction	SFP.....	School Facility Program
P-1.....	First Principal (Apportionment)	SFSD.....	School Fiscal Services Division of COE
P-2.....	Second Principal (Apportionment)	SFSF.....	State Fiscal Stabilization Fund
PAR.....	Peer Assistance and Review	SIG.....	School Improvement Grant
PARS.....	Public Agency Retirement Services	SIP.....	School Improvement Program
PCA.....	Project Cost Account	SLIBG.....	School and Library Improvement Block Grant
PEPRA.....	Public Employees’ Pension Reform Act	SMAA.....	School-Based Medi-Cal Administrative Activities
PERB.....	Public Employment Relations Board	SSPI.....	State Superintendent of Public Instruction
PERS.....	Public Employees Retirement System	SPSA.....	Single Plan for Student Achievement
PI.....	Program Improvement	SSI/SSP.....	Supplement Security Income/State Supplementary Payment
PKS.....	Particular Kinds of Services	SST.....	Student Study Team; also Student Success Team
PL.....	Public Law (federal law)	STAR.....	Standardized Testing and Reporting
PL 81-874.....	Public Law 81-874 (Federal Impact Aid)	STEM.....	Science, Technology, Engineering, and Mathematics
PMIA.....	Pooled Money Investment Account	STRS.....	State Teachers Retirement System
PMIB.....	Pooled Money Investment Board	SWD.....	Students with Disabilities
PPACA.....	Patient Protection and Affordable Care Act	SWP.....	Schoolwide Program
PRSP.....	Pension Rate Stabilization Plan	TANF.....	Temporary Assistance for Needy Families
PSAA.....	Public Schools Accountability Act	TAS.....	Targeted Assistance School
PTA.....	Parent Teachers Association	TIIG.....	Targeted Instructional Improvement Grant
QCR.....	Quality Control Review	TK.....	Transitional Kindergarten
QEIA.....	Quality Education Investment Act	TRANs.....	Tax and Revenue Anticipation Notes
		UPP.....	Unduplicated Pupil Percentage

Santa Clara County  Office of Education

**Santa Clara County Board of Education**

Michael Chang • Joseph Di Salvo • Darcie Green • Rosemary Kamei  
Grace H. Mah • Claudia Rossi • Anna Song

---

**Santa Clara County Superintendent**

Jon R. Gundry

Santa Clara County Office of Education • 1290 Ridder Park Drive • San José, CA 95131-2304  
Phone: (408) 453-6500 • [www.sccoe.org](http://www.sccoe.org)